



CENTRAL BUCKS SCHOOL DISTRICT

LEADING THE WAY

The Central Bucks Schools will provide all students with the academic and problem-solving skills essential for personal development, responsible citizenship, and life-long learning.

AGENDA

SCHOOL BOARD MEETING

February 24, 2015

7:30 p.m.

Patriot Chamber Strings
will perform
7:15 p.m.

- I. Call to Order/Pledge of Allegiance/Roll Call
- II. Approval of School Board Meeting Minutes - February 10, 2015 Pages 1-21
- III. Public Comment
The public is invited to address the Board at this time. Please sign in on the form provided at the microphone. Speakers will be taken in order of sign-in. Each speaker is limited to 3 minutes.
- IV. Superintendent's Report CB Reporting Student Achievement Update
- V. Recommendations for Action
 - A. Treasurer's Report and Summary of Fund Disbursements for the month of January 2015 Pages 22-26

General Fund	\$ 20,761,742.17
Capital Fund	1,549,640.32
Food Service	<u>400,757.50</u>
TOTAL ALL FUNDS	\$ 22,712,139.99
 - B. Approval of Accounts Payable Check Disbursements Pages 27-34
 - 1. General Fund Dates (2/15/15 and 2/19/15) \$1,081,015.85
 - C. Approval of the proposed settlement of a real estate tax assessment appeal with John H. Thompson and TF Partners LLP (Thompson Properties) from 2011-2012 through 2014-2015 for properties (6205 Easton Road, Plumstead Township; 450 Broad Street, Doylestown Township; and 651 North Main Street in Doylestown Borough). The district agrees to pay a lump sum payment for the referenced years in the amount of \$54,975.66. Pages 35-50
 - D. Approval to lease light duty copiers, as needed, from March 2015 to July 2015 at a monthly cost of \$225 per machine pending review of the lease agreement by the solicitor. The lease would be with Canon Solutions America. Page 51

This meeting is being recorded by the Central Bucks School District

E. Approval to grant an Easement to Chalfont Borough for a walking path behind Unami Middle School.

Pages 52-66

F. School Board Policy (1st Read)
#616 – Payment of Bills

Pages 67-70

G. Personnel Items

Pages 71-75

1. Resignations
2. Retirements
3. Unpaid Leaves of Absence
4. Appointments
5. Long-Term Substitute Teachers
6. Long-Term Per Diem Substitute Teachers
7. Classification Changes
8. Community School Staff
9. Summer Band Director
10. Per Diem Substitute Teachers
11. Per Diem Substitute Bus Drivers, Substitute Van Drivers, Substitute Custodians, and Substitute Educational Assistants

H. Student Items

Pages 76-81

1. Adoption of Course of Study
2. Approval of Lenape Middle School 9th Grade Team to travel to Washington, D.C. Dates are April 1, 2015.
3. Approval of Holicong Middle School 9th Grade Class to travel to Washington, D.C. and Arlington, VA. Dates are April 9, 2015.
4. Approval of Unami Middle School 9th Grade Class to travel to New York. Dates are April 16, 2015.

I. Staff Conferences/Workshops

Page 82

VI. Adjournment

Upcoming Meetings: March 10, 2015
March 24, 2015

**CENTRAL BUCKS SCHOOL DISTRICT
SCHOOL BOARD MEETING**

February 10, 2015

The Central Bucks Board of School Directors held its meeting on Tuesday, February 10, 2015 in the Board Room of the Educational Services Center with President Stephen Corr presiding. The meeting was called to order by President Corr at 7:30 p.m., followed by the Pledge of Allegiance.

BOARD MEMBERS PRESENT

Stephen Corr – President, Tyler Tomlinson – Vice President, James Duffy, Paul Faulkner, Geryl McMullin, Kelly Unger, Jerel Wohl

BOARD MEMBERS ABSENT

John Gamble, Joseph Jagelka

ADMINISTRATORS PRESENT

Dr. David Weitzel, Dr. Nancy Silvious, Dr. David Bolton, Andrea DiDio, Scott Kennedy, David Matyas, Dale Scafuro, Edward Sherretta

ALSO PRESENT

Jeffrey Garton – Solicitor, Sharon Reiner - School Board Secretary

APPROVAL OF MINUTES

Motion by Jerel Wohl, supported by Kelly Unger, to approve the minutes of the January 27, 2015 school board meeting.

Motion Approved 7-0.

PUBLIC COMMENT

There was no Public Comment this evening.

SUPERINTENDENT'S REPORT

Video

Board members viewed a video clip entitled *This Month in Central Bucks*. This fifth in a series of videos highlighted the many activities across the district during the month of January 2015. Video clips about the district will be produced monthly. (The video can be found on the CBSD website School Board page under Video Presentations and can also be viewed on CBTV).

Review of 2013-2014 Audit Report

Mr. Jeff Mantz, Manager at Maillie LLP, an independent audit firm, provided school board members an overview of the audit process, a review of internal controls, and the financial position of the school district as of June 30, 2014. Mr. Mantz stated that the district staff do an excellent job year after year. There are sound accounting practices in place and the district has planned well for the impending PSERS pension spike. The district received an unqualified audit report which means there were no issues found. It was a good year for revenues and expenses were controlled to what the budgeted amount should have been. Overall, it was a very strong year for the district.

Student Achievement Report 2014: Part II

Dr. Nancy Silvius, Assistant Superintendent for Secondary Education, presented the most recent SAT/ACT scores, AP enrollment trends, and results from the Senior Plans Survey Class of 2014. The average CB student SAT score for Critical Reading, Math, and Writing was 1642 with an 87% participation rate. In PA the average score was 1481 with an approximate participation rate of 75%, and nationally the score was 1497 with an approximate participation rate of 50%. Some top intended college majors for the Class of 2014 were Business, Commerce, Marketing; Health Professions/Clinical Services; and Engineering. Penn State, University of Pittsburgh, Temple and West Chester were some of the top colleges/universities receiving the most SAT/ACT scores. The SAT measures general college-readiness skills and the ACT measures college readiness based on what students have learned in the classroom. A total of 1490 CB students took the SATs and a total of 509 CB students took the ACTs. This was an increase of 396 from the class of 2013. The average ACT scores for the 2014 CB graduates was 24.4, in PA it was 22.7, and nationally it was 21.0. Dr. Silvius mentioned that about 1/5 of colleges and universities throughout the US have dropped the SAT or ACT as an admissions requirement and it appears that more colleges are doing likewise. Two colleges nearby are Temple and Bryn Mawr. These colleges/universities feel that high school transcripts are a better indicator of the success of the student. Dr. Silvius also reviewed new changes to the SATs beginning in the spring of 2016. The President of the College Board, David Coleman, states/promises that parents should no longer have to pay for expensive college preparation courses. The College Board has partnered with The Khan Academy to offer free tutorials. They should be available in June. Central Bucks offers 19 AP courses out of a total of 35 possible courses. A total of 2,655 AP exams administered were administered in CB in the 2013-2014 school year in grades 10-12. 85% of CB students scored a 3, 4, or 5 on these exams making them eligible for college credit. The state average was 69% and the national average was 59%. The district was one in 547 school districts across the US and in Canada to once again make the College Board's AP Honor Roll. This was done by increasing access to AP coursework and by increasing the percentage of students earning scores of 3 or higher on AP exams. The 2014 Senior Class Survey shows that 91% of students were furthering their education and training (76.7% were entering a four-year college, 13.8% were entering a two-year/community college, and 1% were entering a technical/career school), 4% were entering employment, 2% were entering military service, and 3% had other plans. Colleges attended, types of programs pursued, and class profiles were also discussed. Dr. Silvius pointed out that the class of 2014 (1699 students) was the largest class ever in Central Bucks history.

Dr. Weitzel announced that the district rolled out its Facebook page today. The contents will be reflective of what the district does and will be another way to communicate with the CB community. An e-mail blast was sent out today to families and staff informing them of the Facebook page.

SCHOOL BOARD REPORTS

The Curriculum Committee, Human Resources Committee, and MBIT Executive Council minutes were noted and are Attachment A. Mrs. Unger, MBIT Representative, shared that the MBIT budget will be increasing 1.77% and that a new course, Sports Therapy and Exercise Management, will be offered.

ACCOUNTS PAYABLE CHECK DISBURSEMENTS

Motion by Tyler Tomlinson, supported by Jerel Wohl, to approve the January 31, 2015 and February 5, 2015 General Fund check disbursements; the February 3, 2015 Capital Fund disbursements; and the February 2, 2015 Food Service check disbursements.

Motion Approved 6-0-1. (Geryl McMullin)

BUCKS COUNTY INTERMEDIATE UNIT #22 BUDGET APPROVAL

Motion by Paul Faulkner, supported by Kelly Unger, to approve the Bucks County Intermediate Unit #22 Programs and Services/Instructional Materials & Research Services Budget for 2015-2016.

Motion Approved 7-0.

3M COGENT CONTRACT AND PURCHASE OF EQUIPMENT

Motion by Kelly Unger, supported by James Duffy, to approve the contract with 3M Cogent and the purchase of 2 FBI fingerprinting machines with an initial cost of \$9,900 for equipment and an annual cost of \$600.

Motion Approved 7-0.

AUSTILL'S REHABILITATION SERVICES, INC. CONTRACT

Motion by Kelly Unger, supported by Jerel Wohl, to approve the Austill's Rehabilitation Services, Inc. contract extension to provide occupational and physical therapy services.

Motion Approved 7-0.

SCHOOL BOARD POLICY FOR APPROVAL

Motion by Kelly Unger, supported by James Duffy, to bring School Board Policy 806 – Child Abuse off the table.

Motion Approved 7-0.

Motion by Kelly Unger, supported by James Duffy, to approve School Board Policy 806 – Child Abuse.

PERSONNEL ITEMS

Motion by Paul Faulkner, supported by Jerel Wohl, to approve resignations, retirements, terminations, and unpaid leaves of absence; appointments, long-term substitute teachers, long-term per diem substitute teachers, classification changes, community school staff, and EDRs.

RESIGNATIONS

Name: Anne Areias
Position: Special Education Assistant – Bridge Valley Elementary School
Effective: February 4, 2015

RETIREMENTS

Name: Regina Francois
Position: English teacher – Central Bucks High School – West
Effective: April 21, 2015

TERMINATIONS

Name: Bridgett Szychulski
Position: Music teacher – Central Bucks High School – South
Effective: January 27, 2015

UNPAID LEAVES OF ABSENCE

Jessica Fidler Art teacher – Central Bucks High School – South
May 11, 2015 – August 2015

Kelley Finelli Elementary teacher – Warwick Elementary School
April 24, 2015 – August 2015

Stephanie Hicks Elementary teacher – Buckingham Elementary School
May 4, 2015 – October 9, 2015

Jill Hock Elementary teacher – Butler Elementary School
April 17, 2015 – May 28, 2015

Kaitlyn LaPergola English teacher – Lenape Middle School
April 2, 2015 – May 15, 2015

Keri Rybny Elementary teacher – Groveland Elementary School
April 7, 2015 – August 2015

Erin Scholl Special Education teacher – Central Bucks High School – South
May 7, 2015 – August 2015

Melissa Zielinski Reading teacher – Kutz Elementary School
May 18, 2015 – August 2016

APPOINTMENTS

Name: Charles Cathers
Position: Special Education Assistant – Central Bucks High School – West
\$13.87 per hour
Effective: January 28, 2015

Name: Janet DiGangi
Position: Duty Assistant – Butler Elementary School
\$12.14 per hour
Effective: January 20, 2015

Name: Edward Martin
Position: Personal Care Assistant – Central Bucks High School – East
\$12.14 per hour
Effective: February 9, 2015

Name: Karin Meyer
Position: (Temporary) Guidance Secretary – Lenape Middle School
\$13.87 per hour
Effective: January 21, 2015

Name: Nicholas Miranda
Position: Personal Care Assistant – Bridge Valley Elementary School
\$12.14 per hour
Effective: January 20, 2015

Name: Allie Riegel
Position: Personal Care Assistant – Cold Spring Elementary School
\$12.14 per hour
Effective: January 20, 2015

Name: Melissa Ventresca
Position: (Temporary) Special Education Assistant – Unami Middle School
\$13.87 per hour
Effective: January 26, 2015

LONG-TERM SUBSTITUTE TEACHERS

Name: Moira Calhoun
Position: Special Education teacher – Tohickon Middle School
\$21,935 (B+0 credits, Step 1)
Effective: January 29, 2015 until the end of the 2014-2015 school year

Name: Rebecca Douglass
Position: Social Studies teacher – Tamanend Middle School
\$25,860 (B+0 credits, Step 1)
Effective: January 5, 2015 until the end of the 2014-2015 school year

Name: Alexandra Haeusser
Position: English teacher – Unami Middle School
\$21,473 (B + 0 credits, Step 1)
Effective: February 2, 2015 until the end of the 2014-2015 school year

Name: Nathan Harris
Position: English teacher – Tohickon Middle School
\$21,473 (B+0 credits, Step 1)
Effective: February 2, 2015 until the end of the 2014-2015 school year

Name: Thomas Marsden
Position: (.27) Social Studies teacher – Central Bucks High School – South
\$5,922 (B + 0 credits, Step 1)
Effective: January 29, 2015 until the end of the 2014-2015 school year

Name: Marie Pierce
Position: Special Education teacher – Central Bucks High School – West
\$24,795 (M+0 credits, Step 1)
Effective: January 29, 2015 until the end of the 2014-2015 school year

LONG-TERM PER DIEM SUBSTITUTE TEACHERS

Name: MaryAnna Calotta
Position: Mathematics teacher – Unami Middle School
\$19.75 per hour
Effective: January 23, 2015

Name: Andrew Dowd
 Position: English teacher – Central Bucks High School – East
 \$19.75 per hour
 Effective: February 2, 2015

Name: Victoria Kennedy
 Position: Special Education teacher – Tohickon Middle School
 \$19.75 per hour
 Effective: February 9, 2015

Name: Lucyann Moore
 Position: Elementary teacher – Buckingham Elementary School
 \$19.75 per hour
 Effective: February 20, 2015

Name: Zachary Orenstein
 Position: Social Studies teacher – Holicong Middle School
 \$19.75 per hour
 Effective: January 5, 2015

Name: Karly Seiz
 Position: Elementary teacher – Butler Elementary School
 \$19.75 per hour
 Effective: February 5, 2015

Name: Allison Yannaccone
 Position: Science teacher – Central Bucks High School – East
 \$19.75 per hour
 Effective: February 18, 2015

CLASSIFICATION CHANGES

<u>Name</u>	<u>From</u>	<u>To</u>	<u>Effective Date</u>
Linda Dracopoulos	General Secretary Educational Services Center \$17.82 Per Hour	Administrative Secretary Educational Services Center \$19.67 Per Hour	2/11/15
Naleena Dyal	Duty Assistant Butler \$12.14 Per Hour	Personal Care Assistant Butler \$12.64 Per Hour	1/12/15
Deborah Warren	Personal Care Assistant East \$12.26 Per Hour	Special Education Assistant East \$13.87 Per Hour	1/30/15

COMMUNITY SCHOOL STAFF

Jonathan Drake	Before/After School Program Instructor 2	\$17.30/hour
Michelle Vieille	Before/After School Program Instructor 2	\$17.30/hour

EDR CHANGES

Barbara Seiden	West/Girls Swimming (assignment of open units)	4
Gerry Armani	South/Amplification (assignment of open units)	3

Motion Approved 7-0.

STUDENT ITEMS

Motion by Kelly Unger, supported by James Duffy, to approve the following student trip:

- Lenape Middle School and CB West History Corps clubs to travel to Washington, D.C. Dates are February 20, 2015.

Motion Approved 7-0.

STAFF CONFERENCES/WORKSHOPS

Motion by James Duffy, supported by Jerel Wohl, to approve the following staff to attend the listed conferences/workshops.

Rachel Elliott Walsh	2/25/15	Collaborative & Proactive Solutions	BCIU	120
Aneesh Geevarghese	3/19/15	Infinite Campus Interchange	New York, NY	97
Lea Koehler	3/22-3/25/15	2015 PDE Data Summit	Hershey, PA	484
Laurel Podraza	3/19-3/20/15	Infinite Campus Interchange	New York, NY	296
Jay Moskowitz	2/25/15	Collaborate & Proactive Solutions	BCIU	120
Totals this meeting				\$1,117

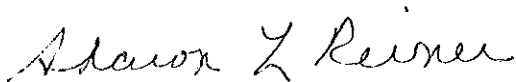
Motion Approved 7-0.

REPORTS/INFORMATION

Mr. Corr announced that Student Activities Reports ending December 31, 2014 for the secondary schools were enclosed as information items.

There being no further business before the Board, motion by Tyler Tomlinson, supported by Jerel Wohl, to adjourn at 8:39 p.m.

Respectfully submitted,



Sharon L. Reiner
Board Secretary

CENTRAL BUCKS SCHOOL DISTRICT
Curriculum Committee Notes
November 12, 2014

MEMBERS PRESENT

John Gamble, Chairperson
Jerel Wohl, Member

OTHER BOARD MEMBERS AND ADMINISTRATORS PRESENT

Tyler Tomlinson	Dr. David Weitzel	Ed Sherretta
Paul Faulkner	Dr. David Bolton	
	Dr. Nancy Silvious	

COMMITTEE MEMBERS ABSENT

Gerri McMullin
Kelly Unger

PUBLIC COMMENT

There was no public comment.

APPROVAL OF MINUTES

Curriculum Committee Minutes from October 8, 2014 were approved as presented.

INFORMATION/DISCUSSION/ACTION ITEMS

Veterans' Day Celebrations—Dr. Weitzel commented on the wonderful tributes throughout Central Bucks. He shared his experience while attending the tribute at Central Bucks High School South.

District E-Communications to Parents —Ed Sherretta, District Informational Technology Director, presented to the committee on various options that are currently being utilized by the district:

1. **District-wide parent emails** are utilized for announcements intended for all homes.
2. **Infinite Campus email blasts** are usually sent from the schools or individual teachers.
3. **Synervoice text messages** are utilized for bus and severe weather information.
4. **Twitter@CBSInfo** is utilized to highlight items of special interest on our website.
5. **District web page** is the main hub of information for families and the community. It also includes individual teacher web pages to provide more student specific information.
6. Media outlets like newspaper, TV, and radio are utilized for press releases and announcements.
7. **Central Bucks Television (CBTV)** is used to broadcast school events and also provides some district-produced programming.
8. **Synervoice voice message** is most commonly used for attendance calls to families.
9. **CBSD staff email blasts** are used to provide information and announcements to the staff.

J. Gamble asked how we can better utilize technology and suggested utilizing Twitter and the front page of the district web site to communicate Board information. P. Faulkner mentioned the number of community members who rely on a Smart Phone for information and how the District may be able to capitalize on that. J. Wohl commented on matching the media used with the intended audience for the information being provided.

Dr. Weitzel stated that he will look into questions and suggestions that were raised.

Flexible Instructional Days from PDE —Dr. Weitzel presented to the committee on this new alternative from the State. This option is a local decision and needs to be a continuation of the normal curriculum and cannot be a stand-alone lesson.

The committee discussed the pros and cons of this alternative. Topics discussed included dealing with power outages, providing Special Education services, providing time for teachers to develop the lessons, providing meaningful content for the students, and assessment.

Calendar for 2015-2016 – Dr. Weitzel led a discussion, and sought feedback, on topics related to establishing next year’s calendar. No decisions were made but the committee discussed the following possibilities:

1. Starting before Labor Day on a consistent basis.
2. Finding ways to end earlier in June.
3. Possibility of students attending some school during Thanksgiving week.
4. Providing a Spring Break for families.
5. The placement of staff development throughout the calendar.
6. Maximizing instructional opportunities prior to PSSA/Keystone/AP testing.
7. Possibility of solidifying the date of graduation as of a certain calendar point.

The following three revised policies are in conjunction with Policy 217 that has recently been revised according to changes mandated by Chapter 4 of the Pennsylvania State Code. These policies required updating and more clarifying information. The High School Guidance Coordinators worked with Dr. Silvius on the language.

Revised School Board Policy 217.1 – Awarding of Credit by Evaluation — This policy is intended for students who have a high proficiency in a certain course content. Students are required to demonstrate a strong understanding on the course final exam and would then earn pass/fail credit on their transcript.

Revised School Board Policy 217.2 – Awarding of Credit Through a College Course — This policy utilizes a college course and allows students to earn a pass/fail on their transcript.

Revised School Board Policy 217.3 – Awarding of Credit Through an Online Course — This policy utilizes an approved online course and students earn a pass/fail on their transcript.

Deletion of School Board Policy 217.4 – Awarding of Credit Through Private Tutoring — This policy is being recommended for deletion since it is redundant and can be accomplished through 217.1.

ANNOUNCEMENTS

The next scheduled meeting is January 14, 2015.

ADJOURNMENT

Notes submitted by Dr. David Bolton, Assistant Superintendent for Elementary Education

CENTRAL BUCKS SCHOOL DISTRICT
Curriculum Committee Notes
January 14, 2015

MEMBERS PRESENT

John Gamble, Chairperson
Jerel Wohl, Member

OTHER BOARD MEMBERS AND ADMINISTRATORS PRESENT

Steve Corr Dr. David Weitzel
 Dr. David Bolton
 Dr. Nancy Silvius

COMMITTEE MEMBERS ABSENT

Kelly Unger

PUBLIC COMMENT

There was no public comment.

PREVIOUS MEETING NOTES

There were no changes

INFORMATION/DISCUSSION/ACTION ITEMS

Pennsylvania Youth Survey—Dale Scafuro presented the results of the 2013 PA Youth Survey. This survey determines the prevalence and frequency of at-risk behaviors as well as the risk and protective factors students identify in their lives. This survey is sponsored by the PA Commission on Crime and Delinquency and is available to the District at no cost. It was given anonymously to all 8th, 10th and 12th grade students.

When compared to results from 2009, students in all grade levels reported a lower 30 day use of alcohol, tobacco, marijuana and inhalants. Additionally students reported engaging in high risk behaviors (defined as binge drinking, driving after alcohol, driving after marijuana) at a lower rate than 2009 in all grade levels. An increase from 2009 was seen in the percentage of students who responded they were “inclined to think I am a failure” and “felt and depressed most days”. The number of risk factors student reported in their lives was a lower than the state average; students reported a greater number of positive assets or protective factors in their lives than the state average.

These results have been shared with district staff and parent groups across the District.

Occupation Therapy/Physical Therapy provider—Austill’s Rehabilitation Services has been providing Occupational and Physical Therapy Services (OT/PT) to the District since 2008. The current contract is set to expire in June 2015 and Austill’s has presented the District with a proposal to extend the contract through June 2018. The new proposal has no increase the first year of the contract and a total increase of 2.6 % over the final two years, representing less than a 1% yearly increase over the life the contract. The total increase from the first contract (July 2008) to the present has been about 1% per year.

In addition to costs, other factors to consider include the high retention rate for therapists which has been important to program continuity, staff relationships and overall quality of service. Austill’s has been extremely responsive to the District’ staffing needs and has reacted quickly to any gaps in service. Additionally Austill’s provides staff development to the therapists as well as training in meeting mandated requirements from PDE (i.e, child abuse) all at no cost to the District.

Revision to Policy 806—Child/Student Abuse—Dr. Silvius presented the revised version of policy 806 and the suggested title change to “Child Abuse.” This revisions in this policy are required by PDE.

The changes reflect much of the information in the Child Protective Services law and the associated revisions to School Code related to identification and reporting requirements for suspected child abuse and training requirements for school employees on recognition and reporting child abuse. This revised policy will move to the next Board meeting for consideration.

Calendar 2015-2016—A draft of the school calendar for 2015-2016 was presented by Dr. Weitzel. He mentioned the following highlights—school starts before Labor Day as per district policy related to the date of Labor Day which builds more instructional days at the beginning of the year before winter weather becomes an issue; elementary students will attend half days on Monday and Tuesday of Thanksgiving week while secondary students attend full day Monday and half day Tuesday. The early dismissal on March 11th satisfies the teacher contract for a half day clerical for elementary teachers at the end of each marking period. Specific planning was given to not having the last school of school occur on a Monday. The draft calendar will move to the next Board meeting for consideration.

ANNOUNCEMENTS

The next scheduled meeting is February 11, 2015.

ADJOURNMENT

Notes submitted by Dr. Nancy Silvius, Assistant Superintendent for Secondary Education

CENTRAL BUCKS SCHOOL DISTRICT
Human Resources Committee Notes
March 12, 2014

The Human Resources Committee meeting was called to order at 6:00 PM by James Duffy.

Committee Members Present

James Duffy, Chairperson
Stephen Corr, Member
Geryl McMullin, Member

Other Board Members and Administrators Present

Joe Jagelka
Paul Faulkner
John Gamble
Tyler Tomlinson
Jerel Wohl
Gilbert Martini, HR Director/Admin. Liaison
David Weitzel, District Superintendent

Public Comment

Members of the public made comments about the dismissal of a CB East coach.

1. Approval of the January 8, 2014 Human Resource Committee Minutes
2. Information/Discussion/Action Items
 - Health Care Cost Summary – The Committee received an update on health care costs. During the current fiscal year large claims totaled \$2.9M with reinsurance reimbursements totaling 1.1M. Even with an increase in large claims, those in excess of \$200,000, overall claims are trending lower.
 - Bucks Montgomery Health Care Consortium – The Committee received an update on continuing district membership in the BMHCC. Also discussed were various funding mechanisms and the additional benefits of continued membership. As the Consortium continues to grow members will receive more competitive hospital and physician discounts and lower fixed costs. While the district currently offers its own medical plans, upon the ratification of a new collective bargaining agreement the district will be required to migrate into the Consortium's preferred medical plans.
 - Substitute Staffing – The Committee reviewed a report on staffing levels, absences and fill rates for substitute teachers, substitute educational assistants and substitute staff nurses. While absences have increased so have fill rates. The district will continue to monitor absence patterns including those on Mondays and Fridays. The administration also recommended hiring two (2) part-time substitute staff nurses to improve staffing and fill rates now 76 percent. Fill rates for teaching positions are above 97%. The district continues to reap rewards from its use of the AESOP absence management software.
 - Executive Session - The committee adjourned to executive session to discuss personnel matters.
3. Adjournment – The meeting adjourned at 7:15 p.m. The next meeting is scheduled for April 9, 2014.
4. Draft Minutes submitted by Gilbert R. Martini, Jr., Human Resources Director and Administrative Liaison to the Human Resources Committee.

CENTRAL BUCKS SCHOOL DISTRICT
Human Resources Committee Notes
January 14, 2015

The Human Resources Committee meeting was called to order at 6:05 PM by Andrea L. DiDio.

Human Resources Committee Members

James Duffy, Chairman
Geryl McMullin, Member
Tyler Tomlinson, Member
Kelly Unger, 1st Alternate

Board Members & Administrators Present

Stephen Corr
John Gamble
Jerel Wohl
Andrea L. DiDio, HR Director/Administrative Liaison
David Weitzel, District Superintendent
Nancy Silvius, Assistant Superintendent for Secondary Education
Dale Scafuro, Director of Student Services

Public Comment: There was no public comment.

1. Approval of the March 12, 2014 Human Resource Committee Notes
2. Information/Discussion/Action Items
 - **Substitute Staffing** – The Committee reviewed a report on staffing levels, absences and fill rates for substitute teachers and substitute staff nurses. While absences have increased fill rates have decreased. The district will continue to monitor absence patterns including those on Mondays and Fridays. The district is recommending the following changes and/or adjustments: return to a daily rate of pay from an hourly rate of pay; recommend an increase of the per diem rate from \$90 per day to \$95 per day; a differential for Monday and Fridays due to the increase in failed to fill rates for these two specific days to \$100 for Monday and/or Friday coverage; Nursing Substitute rate \$105 daily due to failure to fill and difficulty recruiting substitute nurses; a cumulative rate of \$110 per day for days 40+; acceptance of the approximately 100 emergency certified candidates to substitute for the district from the Bucks County Intermediate Unit #22; request of an exemption from PSERS for retired teachers to substitute in daily positions from January 2015 through December 2015 without penalty due to emergency state of substitute fill rates; reach out to colleges/universities offering educations programs to advertise the district. Fill rates for teaching positions are now down to 85% from 97% in 2013. Recommended to move to full Board for action.
 - **Update and overview of Act 168 and Act 153** – An overview of the new Act 168 law was explained regarding new hire employee work history as related to sexual misconduct in any work history where the individual has had direct contact with children. Act 153 was reviewed regarding all school district employees and volunteers being required to furnish new clearances every thirty-six (36) months. There was discussion on the district furnishing the cost for all employees. Recommended to move to full Board for discussion.

- **Bucks Montgomery Health Care Consortium** – The Committee received an update on continuing district membership in the BMHCC and how our first month in the consortium has gone. As the Consortium continues to grow members will receive more competitive hospital and physician discounts and lower fixed costs.
3. **Adjournment** – The meeting adjourned at 6:50 p.m. The next meeting is scheduled for Wednesday, February 11, 2015 at 6:00 p.m.

Draft Notes submitted by Andrea L. DiDio, Human Resources Director and Administrative Liaison to the Human Resources Committee.

MIDDLE BUCKS INSTITUTE OF TECHNOLOGY
EXECUTIVE COUNCIL MINUTES
November 10, 2014

- I. The regular meeting of the MBIT Executive Council was convened on Monday, November 10, 2014, at 5:33 p.m. by Mr. Charles Kleinschmidt, Chairperson, in Room 101 at MBIT. The Executive Council rose to recite the Pledge of Allegiance to the flag. The Council observed a moment of silence for Veterans Day and it was asked to hold in our memory and thoughts anyone we know and also the people that are defending our country now.

Council Members

Mrs. Susan Atkinson, New Hope Solebury S.D.
 Dr. Bill Foster, Council Rock S.D.
 Mr. Joseph Jagelka, Central Bucks S.D.
 Mr. Charles Kleinschmidt, Centennial S.D.
 Mr. Mark B. Miller, Centennial S.D. (Alternate)
 Mrs. Jane Schrader Lynch, Centennial S.D.
 Mrs. Kelly Unger, Central Bucks S.D.

Absent

Mr. Mark Byelich, Council Rock S.D.
 Mr. John Gamble, Central Bucks S.D.
 Mrs. Betty Huf, Centennial S.D.

Others in Attendance:

Dr. Joyce A. Mundy, MBIT Superintendent of Record, Centennial S.D.
 Mrs. Denise Dohoney, Assistant Director
 Mr. Jeffrey Garton, Esq., School Solicitor
 Mr. Richard Hansen, Facility Supervisor
 Mrs. Roberta Jackiewicz, Assistant Board Secretary
 Mr. Vincent Loiacono, Director of Facility Operations
 Mrs. Stacy Pakula, Career and Technical Education Supervisor
 Mrs. Kathryn Strouse, Administrative Director
 Mr. Robert Vining, Business Manager

- II. There were no guests at the meeting.
- III. Mr. Kleinschmidt reported that the Department of Education conducted an on-site Civil Rights Audit at Middle Bucks during the last week of October and the school sailed through the audit with flying colors! There were no non-compliances issued, but a few suggestions were made to make the campus more accessible to people with disabilities. The suggestions included: Establishing a couple of unisex restrooms throughout the school, adding signs directing people to ADA restrooms, wrapping sink pipes in padded plastic so that someone in a wheelchair would not hurt themselves on the pipe, modifying a dental operator to accommodate a student in a wheelchair and repainting a blue wheelchair symbol on one of the parking spaces in the front parking lot. A thank you was extended to those staff members involved in preparing for the audit.

Leadership seems to be a common theme during the month of November. HOSA: Future Healthcare Professionals held an induction ceremony for the newly elected officers that was attended by students, parents, teachers and administrators.

The Central Bucks Chamber of Commerce selected three students from Middle Bucks to be this year's recipients of their Young Citizen Award for demonstration of exceptional commitment to the principles of good citizenship and community involvement. Those students were recognized at a luncheon this past Friday.

During the week of November 17th, we will be sending 25 SkillsUSA Officers and Representatives to the 3-day Fall Leadership Conference in the Poconos, where they will join students from other career and technical schools to learn about leadership and student government.

Mr. Kleinschmidt congratulated Mr. Miller, who recently received the Timothy M. Allwein Advocacy Award that was established in 2011 by PSBA in memory of Tim Allwein, the association's former Assistant Executive Director for Governmental and Member Relations.

- IV. Mrs. Schrader Lynch gave the Council an update on Mrs. Huf. She also noted that the MBIT promotional video was played at the Centennial School Board meeting and the board members were quite impressed. She invited the Council to see Mr. Miller receive his award from the Executive Director of PSBA.
- V. Mrs. Schrader Lynch moved, Mr. Jagelka seconded, passed 6 ayes, 0 nays and 1 abstention (Mr. Miller did not attend the meeting), to approve the minutes of the October 13, 2014 meeting. Attachment 1 (pg. 7)
- VI. Routine Business:

A. Administrative Report

1. Mr. Vining presented an overview of the first draft of the 2015-16 General Fund Budget. He said the goal is to be at or under the Act 1 Index of 1.9%.

The assumptions and unknowns, which include salaries and wages, health insurance, retirement, new program, insurance, utilities, state subsidies and federal grants were discussed.

The increase on the general fund expenditures including lease rental is 6.05% or \$612,157.

The major factors that have impacted the budget including salaries, medical and prescription benefit costs, PSERS pension costs, the new Sports Therapy and Exercise Management Program and other costs were reviewed.

The first look at the General Fund increase that is proposed for the member school districts is 2.63% or \$229,512. Mr. Vining proposed using a portion of the committed fund balance and portions of the unassigned Adult Ed and

Production Control fund balances to pay for the new program and reduce the contributions of the member districts.

Local, State and Federal (Perkins) revenues were discussed. Local revenue has declined, the Vocational Education and Retirement subsidies were increased and federal funding for the Carl D. Perkins Grant was decreased.

The next steps are to gather more information, update the proposed budget with the first/second look at healthcare premiums equivalents, the certified employer rate for PSERS and look for savings. The next presentation will take place on February 9, 2015. Mr. Vining noted that he will present the budgets for the Capital Reserve, Adult Ed, Production, Li'l Bucks Preschool and Student Activity funds at the next presentation. (Attachment C)

There was discussion about the purpose of the fund balances. Mr. Vining explained they have developed over the years. They were for start-up costs for the student built house, restaurant, Adult Ed and some of the other programs. They are also used to buy equipment and for the retirement fund. It was asked if there were any other fund balances. Mr. Vining noted that the Capital Reserve has a fund balance as well. There was discussion about how much money was in the fund balances. It was asked what level Mr. Vining was comfortable at maintaining them and he said at 5%.

Mr. Miller noted that on Tuesday, February 3rd NSBA has 900 School Board members coming in from across the country, two each, to visit their Congressman. Congressman Michael Fitzpatrick is supporting their program. They are going to discuss three issues, the full funding of IDEIA, the congressional hearings about standardized testing and to restore the cuts to the Perkins Grant. Because it is such a small amount of money, they think that restoring the cuts to the Perkins Grant is the only one they are going to get. Mr. Tyler Tomlinson and Mr. Miller will be the representatives from Bucks County. They have the support of Congressman Fitzpatrick, who will be taking the lead role in introducing the Act back to the floor.

2. Mr. Vining reviewed the audit report for fiscal year ended June 30, 2014 as prepared by local auditors, Dreslin & Company, Inc. Certified Public Accountants. Their opinion was unmodified. He reviewed the contents of the report. He explained that it does show the fund balances. There is also the Middle Bucks AVTS Authority audit in the statement and they are to be accepted tonight, received and filed. Those are accounting for the bond refinancing that occurred last year and shows that there was a \$671,000 net gain for the school to use for capital projects. (Attachment 15)

There was a discussion regarding the costs of the new program being a large portion of the budget increase and the amount budgeted for the teachers' salaries.

- B. Mr. Miller moved, Mr. Jagelka seconded, passed unanimously, to receive and file MBIT's update including activities/events, correspondence and related matters as per Attachment 2 (pg. 12)
- C. Committee Reports
1. Dr. Mundy, Superintendent and Chairperson of the Professional Advisory Council said the Professional Advisory Council met on November 5, 2014 and the summary of the meeting was included in the packet. Attachment 3 (pg. 15)
 2. The Building, Security and Technology Committee meeting scheduled on Wednesday, November 5, 2014 at 4:30 PM was cancelled. Mr. Joseph Jagelka, Chairperson. Attachment 4 (pg. 16)
 3. Mr. Kleinschmidt stated he attended both the Program, Policy and Personnel Committee meeting and Finance Committee meeting. Some of the items that were discussed at both of the meetings are on the agenda for approval and are included in the summaries. Mrs. Betty Huf, Chairperson, Program, Policy and Personnel Committee and Mrs. Kelly Unger, Chairperson, Finance Committee. Attachment 5 (pg. 17) and Attachment 6 (pg. 18)
- D. Mr. Miller moved, Mr. Jagelka seconded, passed unanimously, to approve the Cash Payments Report for October. Attachment 7 (pg. 20)
- E. Mr. Miller moved, Mr. Jagelka seconded, passed unanimously, to approve the Treasurer's Report for September. Attachment 8 (pg. 36)

VII. Current Agenda Items

A. Personnel Items

1. Mr. Miller moved, Mr. Jagelka seconded, passed unanimously, to approve the job description and begin recruiting for the Sports Management and Exercise Therapy Teacher. Attachment 9 (pg. 52)

There was a question asking if we were ready to move ahead with the program and the teacher. Mrs. Strouse explained that we would try to hire the teacher before Open House in January on a quarter time basis, so they can purchase equipment and develop the curriculum prior to the program opening. They will also market the program. In September of the next school year, they would work full time and teach half a day and work on marketing and curriculum during the second part of the day. A committee met in October that was comprised of school therapists, fitness trainers, nutritionists, and occupational therapists and they gave us some good suggestions about the equipment we need for the program. A lot of the big equipment that has been used in the field is no longer needed. They suggested we use smaller pieces of equipment, like weights, that patients can use in their home to improve their health and strength. That was good news.

It was asked who would be on the interview team. Mrs. Strouse explained that we usually invite some of the people that are on the committee to help us interview candidates. The other schools that have started this program tended to have hired a Physical Therapist, and that is what they recommended.

It was asked if the exercise therapy portion of this was primarily physical therapy. Mrs. Strouse stated that a part of it is physical therapy and a part of it is fitness training. The program scope that PDE has created describes that they might work with someone who has diabetes or has had a heart attack and needs to build their endurance. It is not necessarily physical therapy, but they need to understand how to exercise and have a healthier lifestyle. That is a type of person that they would work with. There are two career paths, physical therapy or fitness instruction. They can earn a certification in fitness instruction as a high school student.

2. Mr. Miller moved, Mr. Jagelka seconded, passed unanimously, to approve the qualifying leave of absence consistent with Policy #535.1 – Family and Medical Leave for Richard Shustack, Maintenance Mechanic, effective December 22, 2014.
3. Mr. Miller moved, Mr. Jagelka seconded, passed unanimously, to approve the qualifying personal leave of absence consistent with Policy #536 – Personal Necessity Leave for Meghan Reiff, Instructional Assistant, effective November 6, 2014.
4. Mr. Miller moved, Mr. Jagelka seconded, passed unanimously, to approve the membership of the Middle Bucks Local Advisory Council for the 2015 calendar year. Attachment 10 (pg. 55)
5. Mr. Miller moved, Mr. Jagelka seconded, passed unanimously, to ratify employment of the additional fall 2014 Adult Evening School staff. Attachment 11 (pg. 58)
6. Mr. Miller moved, Mr. Jagelka seconded, passed unanimously, to approve the additions to the substitute staff listing for the 2014-2015 school year. Attachment 12 (pg. 59)

B. Other Matters for Consideration

1. Mr. Miller moved, Mr. Jagelka seconded, passed unanimously, to receive and file the calendar of the Executive Council public meeting dates for the 2015 year. Attachment 13 (pg. 60) and Attachment A

Mrs. Strouse explained there was an additional attachment. There are two calendars to approve, one for the Executive Council meetings and the other for the Executive Council Committee meetings.

2. Mr. Miller moved, Mr. Jagelka seconded, passed unanimously, to receive and file the MBAVTS Authority Audit Report prepared by Dreslin and Co., Inc. for the fiscal year ending June 30, 2014. Attachment 14 (pg. 61)
3. Mr. Miller moved, Mr. Jagelka seconded, passed unanimously, to receive and file the MBIT Independent Audit Report prepared by Dreslin and Co., Inc. for the fiscal year ending June 30, 2014. Attachment 15 (pg. 87)
4. Mr. Miller moved, Mr. Jagelka seconded, passed unanimously, to receive and file the GASB 45 actuarial valuation report as of September 1, 2014 from Conrad Siegel Actuaries for financial reporting in fiscal years ended June 30, 2016, 2017 and 2018. Attachment 16 (pg. 130)
5. Mr. Miller moved, Mr. Jagelka seconded, passed unanimously, to approve the Pennsylvania Department of Education Comprehensive Guidance and Counseling Plan. Attachment 17 (pg. 144)
6. Mr. Miller moved, Mr. Jagelka seconded, passed unanimously, to approve the Articulation Agreement with Universal Technical Institute (UTI) – Automotive/Automotive Diesel and Collision Repair and Refinish Technology. Attachment 18 (pg. 182)
7. Mr. Miller moved, Mr. Jagelka seconded, passed unanimously, to approve the Articulation Agreement with Northampton Community College - Automotive Technology. Attachment 19 (pg. 187)
8. Mr. Miller moved, Mr. Jagelka seconded, passed unanimously, to reappoint Dreslin and Co., Inc. as auditors for Middle Buck Institute of Technology and MBAVTS Authority for years ending June 30, 2015, 2016 and 2017. Attachment 20 (pg. 193)
9. Mr. Miller moved, Mr. Jagelka seconded, passed unanimously, to approve a 5-year contract with Burns Mechanical Inc. to provide comprehensive HVAC maintenance services at a cost of \$44,750.00. Attachment 21 (pg. 194)
10. Mr. Miller moved, Mr. Jagelka seconded, passed unanimously, to authorize the Business Manager to execute a contract with a provider for unbundled fixed energy pricing not to exceed 112% of the current rate for energy.
11. Mr. Miller moved, Mr. Jagelka seconded, passed unanimously, to accept the bids for automotive equipment including a tire changer, wheel balancer and 2-post lift to be purchased with the Pennsylvania Department of Education Supplemental CTE Grant. Attachment 22 (pg. 209) and Attachment B

Mrs. Strouse explained there was an additional attachment, which are Mr. Vining's recommendations for the equipment that we would like to purchase for the automotive program. All of the items are covered by grant money that we have already received.

12. Mr. Miller moved, Mr. Jagelka seconded, passed unanimously, to approve budget transfers. Attachment 23 (pg. 211)
 13. Mr. Miller moved, Mr. Jagelka seconded, passed unanimously, to cancel the December public meeting and authorize the Administration to pay bills to be ratified at the January meeting.
- VIII. Mrs. Schrader Lynch moved, Mr. Jagelka seconded, passed unanimously, to adjourn the November 10, 2014 meeting of the MBIT Executive Council at 6:13 PM.

Respectfully submitted,

Susan Atkinson
Secretary

Roberta Jackiewicz
Assistant Secretary

**CENTRAL BUCKS SCHOOL DISTRICT
SCHOOL BOARD MEETING**

February 24, 2015

FOR ACTION: Treasurer's Report

The Treasurer's Report provides a summary of financial transactions for the month of January 2015 which includes receipts, disbursements, and balances for all funds.

RECOMMENDATION:

The administration is recommending that the Board approve the Treasurer's Report for the month of January 2015.

**The Central Bucks School District
General Fund
Treasurer's Report
1/31/2015**

Beginning Cash Balance		\$10,458,135.99
Receipts		
Local General Funds Receipts		
Local Collectors	313,735.17	
County of Bucks	367,787.46	
EIT	829,507.28	
Interest Earnings	19,478.99	
Facility Use Fees	24,632.50	
Tuition, Community School	313,339.73	
Contributions	34,468.35	
Miscellaneous	399,208.90	
Total Local General Funds Receipts	\$2,302,158.38	
State General Fund Receipts		
State Subsidy- Other	1,372,783.30	
Total State General Fund Receipts	\$1,372,783.30	
Federal General Fund Receipts		
Title 2	91,870.81	
Other Federal Subsidies	7,021.20	
Total Federal General Fund Receipts	\$98,892.01	
Other Receipts		
Investments Matured	17,500,000.00	
Offsets to Expenditures	63,894.09	
Total Other Receipts	\$17,563,894.09	
Total Receipts		\$21,337,727.78
Total Beginning Cash Balance and Receipts		\$31,795,863.77

**The Central Bucks School District
General Fund
Treasurer's Report
1/31/2015**

Disbursements

Checks (see detail on following page)		2,958,901.38	
Electronic Payments:			
Debt Service Payments	565,257.74		
Employee Payroll Taxes	1,454,498.05		
Employer Payroll Taxes	423,809.69		
PSERS Retire	902,345.56		
403B/457PMT	384,288.37		
Health Benefit Payments	6,441,361.38		
Transfer to Other Banks	<u>250,000.00</u>		
Electronic Payments Total:		10,421,560.79	
Transfer to Payroll		7,381,280.00	
Total Disbursements			\$20,761,742.17

Summary:

Total Beginning Cash Balance and Receipts (from previous page)		\$31,795,863.77
Cash Disbursements		\$20,761,742.17
Ending Cash Balance	1/31/2015	\$11,034,121.60

The Central Bucks School District
General Fund
Treasurer's Report
Check Reconciliation
1/31/2015

First Check Run- Board Approved 01/13/2015	\$2,599,561.62
Second Check Run- Board Approved 01/27/2015	\$418,898.08
Third Check Run- Board Approved 02/10/2015	<u>\$119,070.49</u>
Total Check Runs- Detail provided when Board Approved	\$3,137,530.19
Less Voided Checks	(<u>\$5,477.04</u>)
Check Run Sub-Total	\$3,132,053.15
Add Prior Month A/P Funded This Month	\$312,311.59
Less This Month A/P To Be Funded Next Month	<u>\$485,463.36</u>
Checks Funded This Month	<u><u>\$2,958,901.38</u></u>

**The Central Bucks School District
Food Service
Treasurer's Report
1/31/2015**

Beginning Cash Balance		\$ 605,582.64
Receipts		
Subsidies	\$ 62,790.76	
Student Lunch Account Deposits	\$ 372,206.67	
Interest Earnings	<u>\$ 149.34</u>	
Total Receipts		\$ 435,146.77
Disbursements		
Checks	\$ -	
Electronic payments	\$ 396,125.03	
Prior month checks paid in January	\$ 4,632.47	
Less this months checks to be paid next month	<u>\$ -</u>	
		\$ 400,757.50
Ending Cash Balance		\$ 639,971.91

**CENTRAL BUCKS SCHOOL DISTRICT
SCHOOL BOARD MEETING**

February 24, 2015

FOR ACTION: Accounts Payable Check Register Approval

The Accounts Payable Check Registers included herein provide a listing of payment transactions for Fund 1 checks dated February 15, 2015 and February 19, 2015.

RECOMMENDATION:

The administration is recommending that the Board approve the payment transactions listed in the Check Registers as noted above.

Bank Account - Check Details by Date
 Central Bucks School District

*fund 11
 AP P/R*

Bank Account: No.: TD GENERAL AP, Bank Acc. Posting Group: <>TRADE, Date Filter: 02/15/15
 Check Ledger: Bank Account No.: TD GENERAL AP

Date	Check No.	Vendor No.	Vendor Name	Amount	Voided Amount	Entry Status
TD GENERAL AP		TD Bank, N.A.				
02/15/15	184286	17102	AMERICAN STUDENT ASSISTANCE	233.88	0.00	Posted
02/15/15	184287	13986	CA SDU	85.93	0.00	Posted
02/15/15	184288	009920	CBEA	68,865.95	0.00	Posted
02/15/15	184289	009921	CBESPA	13,253.76	0.00	Posted
02/15/15	184290	009923	CBTA	1,433.28	0.00	Posted
02/15/15	184291	009990	UNITED STATES TREASURY	50.00	0.00	Posted
02/15/15	184292	010100	UNITED WAY OF BUCKS CO	295.03	0.00	Posted
02/15/15	184293	17693	US DEPARTMENT OF EDUCATION	233.40	0.00	Posted
Totals for 02/15/15				84,451.23	0.00	

Bank Account - Check Details by Date
 Central Bucks School District

fund 0 AP

Bank Account: No.: TD GENERAL AP, Bank Acc. Posting Group: <>PÄYROLL, Date Filter: 02/19/15
 Check Ledger: Bank Account No.: TD GENERAL AP

Date	Check No.	Vendor No.	Vendor Name	Amount	Voided Amount	Entry Status
TD GENERAL AP		TD Bank, N.A.				
02/19/15	184294	17270	21ST CENTURY CYBER CHARTER SC	8,878.76	0.00	Posted
02/19/15	184295	1101	A.D.I. COMMERCIAL SOUND PRODUC	123.98	0.00	Posted
02/19/15	184296	000044	ACE MAINTENANCE	618.30	0.00	Posted
02/19/15	184297	11592	ACHIEVEMENT HOUSE CHARTER SC	5,357.75	0.00	Posted
02/19/15	184298	17815	AED PROFESSIONALS	1,235.24	0.00	Posted
02/19/15	184299	13994	AGORA CYBER CHARTER SCHOOL	22,391.66	0.00	Posted
02/19/15	184300	000576	AIR GAS EAST	80.54	0.00	Posted
02/19/15	184301	000062	ALBERTSONS	101.87	0.00	Posted
02/19/15	184302	17676	AMSTEP PRODUCTS	393.78	0.00	Posted
02/19/15	184303	17387	ANALYTICAL LABORATORIES INC	0.00	0.00	Voided
02/19/15	184304	17387	ANALYTICAL LABORATORIES INC	710.00	0.00	Posted
02/19/15	184305	16823	APPERSON EDUCATION PRODUCTS	1,795.00	0.00	Posted
02/19/15	184306	17176	AQUA WASTEWATER MANAGEMENT	400.00	0.00	Posted
02/19/15	184307	17391	ARAMARK	4,922.06	0.00	Posted
02/19/15	184308	1665	ASCD	54.00	0.00	Posted
02/19/15	184309	1665	ASCD	54.00	0.00	Posted
02/19/15	184310	17895	ATS GROUP, LLC	525.00	0.00	Posted
02/19/15	184311	C05071	AUSTIN, BONNIE	122.08	0.00	Posted
02/19/15	184312	13598	B.E.S.T. SERVICE INC	41.47	0.00	Posted
02/19/15	184313	000488	BAUER, JOSEPH & SONS, INC.	21,926.50	0.00	Posted
02/19/15	184314	D06064	BAUMHER, PAMELA	47.04	0.00	Posted
02/19/15	184315	000495	BEARINGS & DRIVES UNLIMITED	55.50	0.00	Posted
02/19/15	184316	A00351	BIEBL, SUSAN	59.36	0.00	Posted
02/19/15	184317	G09653	BOUGHER, JULIE	283.30	0.00	Posted
02/19/15	184318	008079	BOWER, HARRY	57.12	0.00	Posted
02/19/15	184319	5605	BRADLEY-SCIOCCHETTI, INC.	6,138.84	0.00	Posted
02/19/15	184320	000620	BRETT, E. T. BUSINESS	680.00	0.00	Posted
02/19/15	184321	WR1004	BRIAN & KIMBERLY RESNICK	3,236.10	0.00	Posted
02/19/15	184322	1956	BROADVIEW NETWORKS	6,607.80	0.00	Posted
02/19/15	184323	C05116	BROWN, LAURIE A.	67.48	0.00	Posted
02/19/15	184324	000713	BUCKS COUNTY DEPT. OF HEALTH	250.00	0.00	Posted
02/19/15	184325	000720	BUCKS COUNTY IU #22	141,627.65	0.00	Posted
02/19/15	184326	000738	BUCKS COUNTY WATER & SEWER	0.00	0.00	Voided
02/19/15	184327	000738	BUCKS COUNTY WATER & SEWER	11,066.19	0.00	Posted
02/19/15	184328	17116	BUCKS LEARNING ACADEMY	24,327.00	0.00	Posted
02/19/15	184329	003442	BUILDING SPECIALTIES	871.68	0.00	Posted
02/19/15	184330	17381	CAMPBILL SPECIAL SCHOOL INC	4,063.91	0.00	Posted
02/19/15	184331	000900	CAROLINA BIO SUPPLY CO. (STC)	27.97	0.00	Posted
02/19/15	184332	G09394	CASCIOLE, SHARON	273.72	0.00	Posted
02/19/15	184333	10832	CB-SOUTH STUDENT ACTIVITY ACCO	977.60	0.00	Posted
02/19/15	184334	14321	CENTENNIAL SCHOOL OF LEHIGH UN	4,404.53	0.00	Posted
02/19/15	184335	18185	CENTER FOR PUPPETRY ARTS	310.00	0.00	Posted
02/19/15	184336	000962	CENTRAL BUCKS EAST STUDENT	3,205.40	0.00	Posted
02/19/15	184337	001014	CHALFONT HARDWARE, INC.	118.49	0.00	Posted
02/19/15	184338	16230	CLARITY SERVICE GROUP	5,400.00	0.00	Posted
02/19/15	184339	001020	CNB SEWER AUTHORITY	1,397.20	0.00	Posted
02/19/15	184340	10245	COMMONWEALTH CONNECTIONS AC	28,905.01	0.00	Posted
02/19/15	184341	8519	COMPREHENSIVE LEARNING CENTE	17,800.00	0.00	Posted
02/19/15	184342	17054	COMP SERVICES, INC	1,390.00	0.00	Posted

Bank Account - Check Details by Date

February 19, 2015 10:04 AM

Central Bucks School District

Page 2

MPINTO

Bank Account No.: TD GENERAL AP, Bank Acc. Posting Group: <>PAYROLL, Date Filter: 02/19/15

Check Ledger: Bank Account No.: TD GENERAL AP

Date	Check No.	Vendor No.	Vendor Name	Amount	Voided Amount	Entry Status
TD GENERAL AP		TD Bank, N.A.				
02/19/15	184343	008138	CONTE, EDWINA	45.56	0.00	Posted
02/19/15	184344	005883	CORTINEO CREATIVE	29.95	0.00	Posted
02/19/15	184345	000709	COURIER TIMES INC	517.80	0.00	Posted
02/19/15	184346	16456	D ARMSTRONG INSTALLATIONS	275.00	0.00	Posted
02/19/15	184347	DT1001	DAVID RIZZO	0.00	0.00	Posted
02/19/15	184348	16075	DEANGELIS, MICHAEL & BEATRICE	15,000.00	0.00	Posted
02/19/15	184349	001674	DELTA DENTAL OF PENNSYLVANIA	99,000.00	0.00	Posted
02/19/15	184350	001720	DETLAN EQUIPMENT INC.	308.75	0.00	Posted
02/19/15	184351	9218	DIFFERENT ROADS TO LEARNING	331.45	0.00	Posted
02/19/15	184352	14152	DIRECT ENERGY	31,671.37	0.00	Posted
02/19/15	184353	008181	DOMAN, KAREN	123.87	0.00	Posted
02/19/15	184354	001956	DOYLESTOWN BOROUGH	287.65	0.00	Posted
02/19/15	184355	001920	DOYLESTOWN POSTMASTER	196.00	0.00	Posted
02/19/15	184356	001975	DSI MEDICAL SERVICES INC.	342.00	0.00	Posted
02/19/15	184357	002014	EAGLES PEAK SPRING WATER INC	286.00	0.00	Posted
02/19/15	184358	T5054	EDWARD A. & MARY GASTINEAU	0.00	0.00	Posted
02/19/15	184359	002188	ELECTRONICS EXPRESS	324.30	0.00	Posted
02/19/15	184360	17756	EMR POWER SYSTEMS LLC	1,618.41	0.00	Posted
02/19/15	184361	WW1001	ERNESTO AND JOANNE MESSINA	612.95	0.00	Posted
02/19/15	184362	G09663	EVANS, CHRISTOPHER	34.99	0.00	Posted
02/19/15	184363	E07038	FABREY, MICHELLE	5.75	0.00	Posted
02/19/15	184364	14486	FAIRMOUNT BEHAVIORAL HEALTH S	84.00	0.00	Posted
02/19/15	184365	002341	FEDEX CORPORATION	63.80	0.00	Posted
02/19/15	184366	17175	FLOTRAN PNEU-DRAULICS INC	238.15	0.00	Posted
02/19/15	184367	11572	FORMTECHNOLOGY, INC.	8,296.25	0.00	Posted
02/19/15	184368	G09459	FOSBENNER, CAROLINE	132.44	0.00	Posted
02/19/15	184369	4461	FOUNDATIONS BEHAVIORAL HEALTH	23,562.00	0.00	Posted
02/19/15	184370	002370	GENERAL AIRE SYSTEMS, INC.	1,251.16	0.00	Posted
02/19/15	184371	002635	GEORGE'S TOOL RENTAL	33.00	0.00	Posted
02/19/15	184372	G09355	GEVER, ALLISON	274.00	0.00	Posted
02/19/15	184373	13987	GIANT FOOD STORES	338.92	0.00	Posted
02/19/15	184374	E07043	GILBERT, HANNAH	49.28	0.00	Posted
02/19/15	184375	002757	GRAINGER INC	0.00	0.00	Voided
02/19/15	184376	002757	GRAINGER INC	6,683.00	0.00	Posted
02/19/15	184377	17969	GRIPCASE	159.95	0.00	Posted
02/19/15	184378	16584	GROVE CITY AREA SCHOOL DISTRIC	1,860.00	0.00	Posted
02/19/15	184379	002839	GROVE SUPPLY, INC.	0.00	0.00	Voided
02/19/15	184380	002839	GROVE SUPPLY, INC.	184.53	0.00	Posted
02/19/15	184381	002892	HAJOCA CORPORATION	287.30	0.00	Posted
02/19/15	184382	13568	HALLIWELL, MARILYNN	82.10	0.00	Posted
02/19/15	184383	6243	HANDWRITING WITHOUT TEARS	25.95	0.00	Posted
02/19/15	184384	G09082	HAVILAND, SUZANNA	163.88	0.00	Posted
02/19/15	184385	16752	HENDRI, JENNIFER	720.00	0.00	Posted
02/19/15	184386	17548	HMS SCHOOL FOR CHILDREN WITH	9,210.00	0.00	Posted
02/19/15	184387	003208	HOME DEPOT	0.00	0.00	Voided
02/19/15	184388	003208	HOME DEPOT	1,955.27	0.00	Posted
02/19/15	184389	D06059	HOWARD, BETH	67.20	0.00	Posted
02/19/15	184390	18085	IDENTITY ADVISORS	10,000.00	0.00	Posted
02/19/15	184391	003364	INTEGRA ONE	1,075.37	0.00	Posted

Bank Account - Check Details by Date

February 19, 2015 10:04 AM

Central Bucks School District

Page 3

MPINTO

Bank Account: No.: TD GENERAL AP, Bank Acc. Posting Group: <-PAYROLL, Date Filter: 02/19/15

Check Ledger: Bank Account No.: TD GENERAL AP

Date	Check No.	Vendor No.	Vendor Name	Amount	Voided Amount	Entry Status
TD GENERAL AP		TD Bank, N.A.				
02/19/15	184392	8527	INTERQUEST DETECTION CANINES	450.00	0.00	Posted
02/19/15	184393	17129	IPEVO	1,585.00	0.00	Posted
02/19/15	184394	003445	J & J SPILL SERVICE & SUPPLIES	1,648.50	0.00	Posted
02/19/15	184395	12929	JOHN DUBYK CONTRACTORS, INC.	14,056.88	0.00	Posted
02/19/15	184396	G09623	JOHNSON, JACQUELINE	1,550.00	0.00	Posted
02/19/15	184397	11973	K & H WINDOW WORLD, INC.	4,025.00	0.00	Posted
02/19/15	184398	17259	K12 ENTERPRISE	1,022.50	0.00	Posted
02/19/15	184399	17285	KDI	14,826.22	0.00	Posted
02/19/15	184400	3620	KEYSTONE TREE EXPERTS	100.00	0.00	Posted
02/19/15	184401	003573	KMART #3737	19.17	0.00	Posted
02/19/15	184402	F08050	KOCH, KIMBERLY	105.84	0.00	Posted
02/19/15	184403	G09376	KRINEY, JASON	78.06	0.00	Posted
02/19/15	184404	18045	LAKE, JEFF	48.94	0.00	Posted
02/19/15	184405	003777	LAKESIDE EDUCATIONAL NETWORK	60,239.43	0.00	Posted
02/19/15	184406	18124	LEARNnco SCIENCE & LEARNING	360.00	0.00	Posted
02/19/15	184407	C05161	LEAVER, KATHY	62.50	0.00	Posted
02/19/15	184408	D06008	LORENZ, DANIEL	634.50	0.00	Posted
02/19/15	184409	16315	MAILLIE LLP	8,500.00	0.00	Posted
02/19/15	184410	13941	MARKS, GINA	89.55	0.00	Posted
02/19/15	184411	17403	MARY VAN ELLIS	120.81	0.00	Posted
02/19/15	184412	18182	MCMASTER-CARR	67.52	0.00	Posted
02/19/15	184413	18190	McCARTY UPHOLSTERY	2,500.00	0.00	Posted
02/19/15	184414	3548	MEDCO SUPPLY COMPANY	163.73	0.00	Posted
02/19/15	184415	18133	MELANIE SOBIECH	46.72	0.00	Posted
02/19/15	184416	7932	MILL CREEK STUDENT ACTIVITY ACC	100.00	0.00	Posted
02/19/15	184417	16442	MONTGOMERY COUNTY I U	25,064.55	0.00	Posted
02/19/15	184418	G09662	MONTGOMERY, KATHLYN	148.67	0.00	Posted
02/19/15	184419	004433	NAPA OF DOYLESTOWN	0.00	0.00	Voided
02/19/15	184420	004433	NAPA OF DOYLESTOWN	32.43	0.00	Posted
02/19/15	184421	12242	NAT'L ELEVATOR INSPECTION SERVI	186.00	0.00	Posted
02/19/15	184422	17656	NATIONAL ENERGY CONTROL CORP	915.25	0.00	Posted
02/19/15	184423	14266	NAVIANCE, INC.	16,002.75	0.00	Posted
02/19/15	184424	10007	NEW BRITAIN FAMILY PRACTICE	80.00	0.00	Posted
02/19/15	184425	004638	OFFICE BASICS	0.00	0.00	Voided
02/19/15	184426	004638	OFFICE BASICS	0.00	0.00	Voided
02/19/15	184427	004638	OFFICE BASICS	0.00	0.00	Voided
02/19/15	184428	004638	OFFICE BASICS	0.00	0.00	Voided
02/19/15	184429	004638	OFFICE BASICS	3,672.90	0.00	Posted
02/19/15	184430	004816	PAESSP	595.00	0.00	Posted
02/19/15	184431	17739	PAPCO	110,116.61	0.00	Posted
02/19/15	184432	7564	PAPER MART INC.	198.85	0.00	Posted
02/19/15	184433	16764	PEARSON CLINICAL ASSESSMENTS	1,202.25	0.00	Posted
02/19/15	184434	004929	PETTY CASH COMMUNITY SCHOOL	353.64	0.00	Posted
02/19/15	184435	004920	PETTY CASH GAYMAN	215.29	0.00	Posted
02/19/15	184436	004922	PETTY CASH LINDEN	249.47	0.00	Posted
02/19/15	184437	004951	PETTY CASH WARWICK	228.86	0.00	Posted
02/19/15	184438	11699	PHILADELPHIA EXTRACT COMPANY	381.55	0.00	Posted
02/19/15	184439	008726	PHILLIPS, NANCY	73.42	0.00	Posted
02/19/15	184440	4116	PIONEER VALLEY BOOKS	847.00	0.00	Posted

Bank Account - Check Details by Date

Central Bucks School District

February 19, 2015 10:04 AM

Page 4

MPINTO

Bank Account: No.: TD GENERAL AP, Bank Acc. Posting Group: <-PAYROLL, Date Filter: 02/19/15

Check Ledger: Bank Account No.: TD GENERAL AP

Date	Check No.	Vendor No.	Vendor Name	Amount	Voided Amount	Entry Status
TD GENERAL AP		TD Bank, N.A.				
02/19/15	184441	18129	PIRANIAN, JEANETTE	812.00	0.00	Posted
02/19/15	184442	005126	PITNEY BOWES, INC.	282.00	0.00	Posted
02/19/15	184443	13151	PLAQUES AND SUCH	440.12	0.00	Posted
02/19/15	184444	005172	PLUMSTEAD CHRISTIAN SCH	17,253.00	0.00	Posted
02/19/15	184445	8849	PROUD, SUSAN	103.32	0.00	Posted
02/19/15	184446	005304	PUBLIC SCH EMP RET SYSTEM	0.00	0.00	Voided
02/19/15	184447	005304	PUBLIC SCH EMP RET SYSTEM	7,854.67	0.00	Posted
02/19/15	184448	17568	RACKSPACE MANAGED HOSTING	1,575.00	0.00	Posted
02/19/15	184449	005363	RADIO SHACK	235.33	0.00	Posted
02/19/15	184450	16986	RADNOR TOWNSHIP SCHOOL DISTRI	7,560.00	0.00	Posted
02/19/15	184451	17080	RELIANT ASSET MANAGEMENT	6,000.00	0.00	Posted
02/19/15	184452	2424	RESOURCES FOR READING, INC.	87.08	0.00	Posted
02/19/15	184453	008011	RINPOCHE, SANTOKH	18.14	0.00	Posted
02/19/15	184454	008783	ROMESBURG, JOAN	161.28	0.00	Posted
02/19/15	184455	G09641	Robinson, Jennifer	78.40	0.00	Posted
02/19/15	184456	G09450	RUSH, BRIAN	84.15	0.00	Posted
02/19/15	184457	005544	RUSSO MUSIC CENTER	87.50	0.00	Posted
02/19/15	184458	6375	S & G WATER CONDITIONING	2,750.00	0.00	Posted
02/19/15	184459	005585	S.D.I.C.	32,323.17	0.00	Posted
02/19/15	184460	008825	SCHMIDT, BRIDGET	1,555.00	0.00	Posted
02/19/15	184461	005616	SCHOOL HEALTH CORPORATION	199.99	0.00	Posted
02/19/15	184462	17617	SCHOOLWIRES, INC	900.00	0.00	Posted
02/19/15	184463	17777	SCIENTIFIC WATER CONDITIONING	2,765.00	0.00	Posted
02/19/15	184464	10070	SDI	450.00	0.00	Posted
02/19/15	184465	A00896	SERLEN, DANA	108.75	0.00	Posted
02/19/15	184466	005706	SERVICE TIRE TRUCK CENTERS, INC	973.04	0.00	Posted
02/19/15	184467	G09664	SHEEHAN, KAREN	681.00	0.00	Posted
02/19/15	184468	13573	SPEECH PATHOLOGY CONSULTANT	680.00	0.00	Posted
02/19/15	184469	008843	STAHL, DIANNE	29.96	0.00	Posted
02/19/15	184470	11825	STEVE SPANGLER SCIENCE, INC.	131.95	0.00	Posted
02/19/15	184471	14120	SUBURBAN AQUATIC LEAGUE	2,198.00	0.00	Posted
02/19/15	184472	G09419	SULLIVAN, MELANIE	72.20	0.00	Posted
02/19/15	184473	006024	SUNDANCE/NEWBRIDGE EDUCATION	686.40	0.00	Posted
02/19/15	184474	G09635	SWOYER, JENNIFER	35.28	0.00	Posted
02/19/15	184475	008892	TAYLOR, J. GARY	368.96	0.00	Posted
02/19/15	184476	B04017	TAYLOR, NICHOLAS	77.73	0.00	Posted
02/19/15	184477	006087	TEACHER CREATED MATERIALS	131.03	0.00	Posted
02/19/15	184478	18177	TEAM EXPRESS	844.19	0.00	Posted
02/19/15	184479	000426	THE BAASE COMPANY	653.57	0.00	Posted
02/19/15	184480	12420	THE PEACE CENTER	1,000.00	0.00	Posted
02/19/15	184481	4714	THERAPY SHOPPE, INC	31.46	0.00	Posted
02/19/15	184482	12620	TONER CABLE EQUIPMENT INC.	695.00	0.00	Posted
02/19/15	184483	9004	TRAINER'S WAREHOUSE	45.03	0.00	Posted
02/19/15	184484	17509	TRENCHLESS LINE COMPANY	1,914.00	0.00	Posted
02/19/15	184485	12131	TRI-COUNTY ELECTRICAL SUPPLY	887.74	0.00	Posted
02/19/15	184486	006259	UNAMI STUDENT ACTIVITY ACCOUNT	952.00	0.00	Posted
02/19/15	184487	17127	UPPER DUBLIN AQUATIC CLUB	80.00	0.00	Posted
02/19/15	184488	17921	USA Blue Book	331.71	0.00	Posted
02/19/15	184489	14700	VECTOR SECURITY	1,041.00	0.00	Posted

Bank Account - Check Details by Date

February 19, 2015 10:04 AM

Central Bucks School District

Page 5

MPINTO

Bank Account: No.: TD GENERAL AP, Bank Acc. Posting Group: <>PAYROLL, Date Filter: 02/19/15

Check Ledger: Bank Account No.: TD GENERAL AP

Date	Check No.	Vendor No.	Vendor Name	Amount	Voided Amount	Entry Status
TD GENERAL AP		TD Bank, N.A.				
02/19/15	184490	000511	VERIZON	673.08	0.00	Posted
02/19/15	184491	7947	VERIZON WIRELESS	7,132.13	0.00	Posted
02/19/15	184492	10657	VERSATILE COMMUNICATIONS	480.00	0.00	Posted
02/19/15	184493	G09389	VILBAS, BROOKE	180.60	0.00	Posted
02/19/15	184494	006396	VISUAL SOUND, INC.	25.00	0.00	Posted
02/19/15	184495	16343	WALKER ENTERPRISES/DESK A DOO	38.85	0.00	Posted
02/19/15	184496	C05067	WALLOFF, ALYSSA	63.56	0.00	Posted
02/19/15	184497	16671	WASTE MANAGEMENT	15,233.89	0.00	Posted
02/19/15	184498	18188	WEINSTEIN & COMPANY	3,159.50	0.00	Posted
02/19/15	184499	13932	WELLS FARGO BANK	400.00	0.00	Posted
02/19/15	184500	006527	WELLS TECHNOLOGY, INC.	440.90	0.00	Posted
02/19/15	184501	4196	WILLIAM FOSTER & SONS	417.68	0.00	Posted
02/19/15	184502	16553	WILLIS OF PENNSYLVANIA, INC	471.00	0.00	Posted
02/19/15	184503	008964	WODYKA, SHARON	618.76	0.00	Posted
02/19/15	184504	17254	WOEHR, LAUREN	35.84	0.00	Posted
02/19/15	184505	006721	ZEE MEDICAL SERVICE COMPANY	138.07	0.00	Posted
02/19/15	184506	006720	ZEP MANUFACTURING CO.	195.02	0.00	Posted
02/19/15	C007474	6484	BEGLEY, CARLIN & MANDIO	4,884.00	0.00	Posted
02/19/15	C007475	13648	BUCHANAN INGERSOLL & ROONEY P	498.00	0.00	Posted
02/19/15	C007476	13648	BUCHANAN INGERSOLL & ROONEY P	2,850.20	0.00	Posted
02/19/15	C007477	13648	BUCHANAN INGERSOLL & ROONEY P	996.00	0.00	Posted
02/19/15	C007478	001221	COLONIAL ELECTRIC SUPPLY, INC.	633.96	0.00	Posted
02/19/15	C007479	001221	COLONIAL ELECTRIC SUPPLY, INC.	96.18	0.00	Posted
02/19/15	C007480	001221	COLONIAL ELECTRIC SUPPLY, INC.	47.42	0.00	Posted
02/19/15	C007481	001221	COLONIAL ELECTRIC SUPPLY, INC.	287.50	0.00	Posted
02/19/15	C007482	001221	COLONIAL ELECTRIC SUPPLY, INC.	18.31	0.00	Posted
02/19/15	C007483	001221	COLONIAL ELECTRIC SUPPLY, INC.	39.97	0.00	Posted
02/19/15	C007484	001221	COLONIAL ELECTRIC SUPPLY, INC.	39.97	0.00	Posted
02/19/15	C007485	001221	COLONIAL ELECTRIC SUPPLY, INC.	217.10	0.00	Posted
02/19/15	C007486	001221	COLONIAL ELECTRIC SUPPLY, INC.	410.28	0.00	Posted
02/19/15	C007487	001221	COLONIAL ELECTRIC SUPPLY, INC.	51.24	0.00	Posted
02/19/15	C007488	001221	COLONIAL ELECTRIC SUPPLY, INC.	363.24	0.00	Posted
02/19/15	C007489	001221	COLONIAL ELECTRIC SUPPLY, INC.	923.18	0.00	Posted
02/19/15	C007490	001221	COLONIAL ELECTRIC SUPPLY, INC.	380.10	0.00	Posted
02/19/15	C007491	001221	COLONIAL ELECTRIC SUPPLY, INC.	123.80	0.00	Posted
02/19/15	C007492	001221	COLONIAL ELECTRIC SUPPLY, INC.	109.50	0.00	Posted
02/19/15	C007493	001221	COLONIAL ELECTRIC SUPPLY, INC.	23.34	0.00	Posted
02/19/15	C007494	001221	COLONIAL ELECTRIC SUPPLY, INC.	471.30	0.00	Posted
02/19/15	C007495	001221	COLONIAL ELECTRIC SUPPLY, INC.	409.56	0.00	Posted
02/19/15	C007496	001221	COLONIAL ELECTRIC SUPPLY, INC.	1,083.00	0.00	Posted
02/19/15	C007497	001221	COLONIAL ELECTRIC SUPPLY, INC.	672.00	0.00	Posted
02/19/15	C007498	001221	COLONIAL ELECTRIC SUPPLY, INC.	22.59	0.00	Posted
02/19/15	C007499	001221	COLONIAL ELECTRIC SUPPLY, INC.	1,115.31	0.00	Posted
02/19/15	C007500	001221	COLONIAL ELECTRIC SUPPLY, INC.	-248.40	0.00	Posted
02/19/15	C007501	11773	CRITERION LABORATORIES, INC.	210.00	0.00	Posted
02/19/15	C007502	001980	DUFF SUPPLY CO.	1,800.58	0.00	Posted
02/19/15	C007503	001980	DUFF SUPPLY CO.	33.31	0.00	Posted
02/19/15	C007504	002419	FISHER & SON CO., INC.	5,022.50	0.00	Posted
02/19/15	C007505	002438	FOLLETT SCHOOL SOLUTIONS, INC	1,861.33	0.00	Posted

Bank Account - Check Details by Date
 Central Bucks School District

February 19, 2015 10:04 AM

Page 6

MPINTO

Bank Account No.: TD GENERAL AP, Bank Acc. Posting Group: <-PAYROLL, Date Filter: 02/19/15

Check Ledger: Bank Account No.: TD GENERAL AP

Date	Check No.	Vendor No.	Vendor Name	Amount	Voided Amount	Entry Status
TD GENERAL AP		TD Bank, N.A.				
02/19/15	C007506	002438	FOLLETT SCHOOL SOLUTIONS, INC	94.74	0.00	Posted
02/19/15	C007507	003040	HEINEMANN	22.50	0.00	Posted
02/19/15	C007508	14115	LORBER PLUMBING	649.46	0.00	Posted
02/19/15	C007509	14115	LORBER PLUMBING	927.90	0.00	Posted
02/19/15	C007510	14115	LORBER PLUMBING	35.27	0.00	Posted
02/19/15	C007511	005524	PHILIP ROSENAU CO., INC.	196.13	0.00	Posted
02/19/15	C007512	005524	PHILIP ROSENAU CO., INC.	181.34	0.00	Posted
02/19/15	C007513	005524	PHILIP ROSENAU CO., INC.	147.88	0.00	Posted
02/19/15	C007514	005524	PHILIP ROSENAU CO., INC.	5,410.10	0.00	Posted
02/19/15	C007515	005524	PHILIP ROSENAU CO., INC.	131.17	0.00	Posted
02/19/15	C007516	005524	PHILIP ROSENAU CO., INC.	144.50	0.00	Posted
02/19/15	C007517	005524	PHILIP ROSENAU CO., INC.	156.29	0.00	Posted
02/19/15	C007518	16172	WB MASON CO, INC	33.50	0.00	Posted
02/19/15	C007519	16172	WB MASON CO, INC	52.36	0.00	Posted
02/19/15	C007520	5558	WEINSTEIN SUPPLY	61.69	0.00	Posted
02/19/15	C007521	16128	WIRELESS COMM & ELECTRONICS	163.20	0.00	Posted
02/19/15	E000003	004848	PA UC FUND	10,645.80	0.00	Posted
			Totals for 02/19/15	996,564.62	0.00	

**CENTRAL BUCKS SCHOOL DISTRICT
SCHOOL BOARD MEETING**

February 24, 2015

FOR ACTION: Real Estate Tax Assessment Appeal

Three properties are a part of this settlement parcel #34-004-009-001 6205 Easton Road, Plumstead Township; parcel # 09-009-043-001 450 Board Street, Doylestown Township; parcel # 18-002-003, Doylestown Borough.

The current assessed value for all three properties is \$351,520. The new agreed upon assessed value is \$221,076.

Jeff Garton's team has come to resolution with opposing counsel and has recommended settlement for years 2011-12 through 2014-15. Under the proposed negotiated terms of the settlement, Central Bucks School District would refund \$\$54,975.66

RECOMMENDATION:

The recommendation is to accept the proposed settlement. We have reviewed all the details with our commercial real estate appraiser, Liberty Valuation, and they have assured us that this is a fair settlement. The district will lose approximately \$16,200.00 a year in real estate tax revenue in future years. The district has reserved funds that are sufficient to cover this settlement amount.

Central Bucks School District
Proposed Real Estate Tax Assessment Appeal Settlement with Thompson Properties

John H Thompson 6205 Easton RD
Parcel # 34-004-009-001

Effective Date	School Tax Year	Old Assessment	New Assessment	Assessment Change	Millage rate	Refund due
January 1, 2012- June 30,2012	11-12	84,200	59,325	24,875	0.1208	1,502.45
July 1, 2012-Dec 31, 2012	12-13	84,200	56,700	27,500	0.1228	1,688.50
January 1, 2013- June 30,2013	12-13	84,200	56,700	27,500	0.1228	1,688.50
July 1, 2013-Dec 31, 2013	13-14	84,200	57,750	26,450	0.1228	1,624.03
January 1, 2014- June 30,2014	13-14	84,200	57,750	26,450	0.1228	1,624.03
July 1, 2014-Dec 31, 2014	14-15	84,200	56,700	27,500	0.1241	1,706.38
January 1, 2015- June 30,2015	14-15	84,200	56,700	27,500	0.1241	1,706.38
Total Amount of refund						11,540.26

TF Part 450 Broad Street
Parcel # 09-009-043-001

Effective Date	School Tax Year	Old Assessment	New Assessment	Assessment Change	Millage rate	Refund due
January 1, 2012- June 30,2012	11-12	191,720	132,775	58,945	0.1208	3,560.28
July 1, 2012-Dec 31, 2012	12-13	191,720	126,960	64,760	0.1228	3,976.26
January 1, 2013- June 30,2013	12-13	191,720	126,960	64,760	0.1228	3,976.26
July 1, 2013-Dec 31, 2013	13-14	191,720	129,250	62,470	0.1228	3,835.66
January 1, 2014- June 30,2014	13-14	191,720	129,250	62,470	0.1228	3,835.66
July 1, 2014-Dec 31, 2014	14-15	191,720	126,900	64,820	0.1241	4,022.08
January 1, 2015- June 30,2015	14-15	191,720	126,900	64,820	0.1241	4,022.08
Total Amount of refund						27,228.28

TF Part 651 N Main Street
Parcel # 08-002-003

Effective Date	School Tax Year	Old Assessment	New Assessment	Assessment Change	Millage rate	Refund due
January 1, 2012- June 30,2012	11-12	75,600	39,211	36,389	0.1208	2,197.90
July 1, 2012-Dec 31, 2012	12-13	75,600	37,476	38,124	0.1228	2,340.81
January 1, 2013- June 30,2013	12-13	75,600	37,476	38,124	0.1228	2,340.81
July 1, 2013-Dec 31, 2013	13-14	75,600	38,170	37,430	0.1228	2,298.20
January 1, 2014- June 30,2014	13-14	75,600	38,170	37,430	0.1228	2,298.20
July 1, 2014-Dec 31, 2014	14-15	75,600	37,476	38,124	0.1241	2,365.59
January 1, 2015- June 30,2015	14-15	75,600	37,476	38,124	0.1241	2,365.59
Total Amount of refund						16,207.12

Grand Total of refund of current & prior fiscal years \$54,975.66

Lost real estate revenue per year starting in 2015-2016 \$16,188.10
assuming millage rate remains fixed at 124.1 mills

WILLIAM J. CARLIN
1926-2004
S. RICHARD KLINGES, III
1932 - 2011

THOMAS J. PROFY, III
JOHN P. KOOPMAN
JEFFREY P. GARTON
THOMAS R. HECKER
JOSEPH S. BRITTON
DOUGLAS C. MALONEY
THOMAS J. PROFY, IV*†
FRANCIS X. DILLON
TODD M. SAILER*
LYNN S. EVANS
JOHN A. TORRENTE*
SIOBHAN D. BYRNES†
MICHAEL P. ALFORD
NATHAN D. FOX*
STEVEN M. JONES

*Member of PA & NJ Bars
†Master of Laws (Taxation)

BEGLEY, CARLIN & MANDIO, LLP
ATTORNEYS AT LAW
680 MIDDLETOWN BOULEVARD
P.O. BOX 308
LANGHORNE, PENNSYLVANIA 19047-0308

215.750.0110
FAX: 215.750.0954
jgarton@begleycarlin.com

December 2, 2014

OF COUNSEL
ANTHONY A. MANDIO
JAMES A. DOWNEY, III
SCOTT A. PETRI
FRANK A. FARRY

BRISTOL
215.788.0471

NEW JERSEY OFFICE
1670 WHITEHORSE-HAMILTON SQUARE RD.
P.O. BOX 8188
HAMILTON, NJ 08690
609.588.5599

VIA EMAIL – dmatyas@cbsd.org

David Matyas, Business Administrator
Central Bucks School District
20 Welden Drive
Doylestown, PA 18901

Re: Thompson Properties

Dear Dave:

Attached please find three (3) proposed Settlement Stipulations in connection with the three pending matters involving the Thompson property holdings.

The numbers appear reasonable and are based on the dialogue that had occurred between myself, the District's appraiser and the attorney for the Thompson property owners.

Please review and advise if you are agreeable that I execute the Stipulations. Obviously, you may want to discuss this with the Finance Committee.

Please advise.

Very truly yours,



Jeffrey P. Garton

JPG:vp
enclosures



P : 570-820-3332
F : 570-820-3262
HoegenLaw.com

Phone Extension 305
E-MAIL: foegen@hoegenlaw.com

November 6, 2014

Via email jgarton@begleycarlin.com

JEFFREY GARTON, ESQUIRE
680 MIDDLETOWN BOULEVARD
LANGHORNE, PA 19047

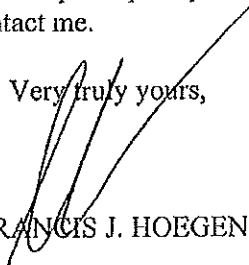
RE: John H. Thompson v. Bucks County Board of Assessment Appeals, et al
Docket #2011-10932-26-6 / **6205 Easton Road**
TF Partners, LLP v. Bucks County Board of Assessment Appeals, et al
Docket #2011-10946-29-6 / **450 Broad Street**
TF Partners, LLP v. Bucks County Board of Assessment Appeals, et al
Docket #2011-10947-30-6 / **651 North Main Street**

Dear Jeff:

Attached are the Stipulations and Orders for the above-referenced matters. Kindly sign on behalf of the School District and return the original to me at your earliest opportunity.

Thank you in advance for your anticipated prompt response. If you have any questions or comments, please do not hesitate to contact me.

Very truly yours,


FRANCIS J. HOEGEN

FJH/lh
Enc.

Cc: Client

LA\Tax Appeals\Thompson Org\2012\Garton Ltr5.Doc

IN THE COURT OF COMMON PLEAS OF BUCKS COUNTY, PENNSYLVANIA
CIVIL ACTION -- LAW

IN RE:	Appeal of John H. Thompson	:	No. 11-10932-26-6
		:	
	From Bucks County Board of	:	
	Assessment Appeals	:	
	Tax Parcel No. 34-004-009-001	:	
		:	
	Municipality: Plumstead Township	:	ASSESSMENT APPEAL
	Assessment for Year 2012	:	
		:	
	Property of John H. Thompson	:	

STIPULATION

AND NOW, this ____ day of _____, 2014, the parties to the above-captioned action, hereby stipulate and agree as follows:

1. That the Assessment for Tax Parcel No. 34-004-009-001, located at 6205 Easton Road, is fixed as follows:

Fifty-Nine Thousand Three Hundred Twenty-Five (\$59,325) Dollars effective for the 2012 Tax Year;

Fifty-Six Thousand Seven Hundred (\$56,700) Dollars effective for the 2013 Tax Year;

Fifty-Seven Thousand Seven Hundred Fifty (\$57,750) Dollars effective for the 2014 Tax Year; and

Fifty-Six Thousand Seven Hundred (\$56,700) Dollars effective for the 2015 tax year and subsequent years (until changed or modified in accordance with the Laws of the Commonwealth of Pennsylvania);

2. That Central Bucks School District shall, within forty-five (45) days of the date of entry of the Order on this Stipulation, issue real estate tax refunds due John H. Thompson to Hoegen & Associates, P.C., 152 South Franklin Street, Wilkes-Barre, Pennsylvania 18701, which real estate tax refunds shall be determined on the basis of the assessment fixed for the 2012, 2013, 2014 and 2015 Tax Years under the Order entered on this Stipulation;
3. That Bucks County and Plumstead Township shall, within forty-five (45) days of the date of entry of the Order on this Stipulation, issue real estate tax refunds due John H. Thompson to Hoegen & Associates, P.C., 152 South Franklin Street, Wilkes-Barre, Pennsylvania 18701, which real estate tax refunds shall be determined on the basis of the assessment fixed for the 2012, 2013, 2014 and 2015 Tax Years under the Order entered on this Stipulation;
4. That no interest shall accrue on the real estate tax refunds due from Bucks County, Plumstead Township and the Central Bucks School District under the Order entered on this Stipulation, including during the period that the real estate tax refunds due from Central Bucks School District for Tax Years 2012, 2013, 2014 and 2015 for the 2012, 2013, 2014 and 2015 Tax Years of the School District; and

5. That this Appeal shall be marked SETTLED, DISCONTINUED AND ENDED, and each party shall pay their respective costs.

HOEGEN & ASSOCIATES, P.C.

CENTRAL BUCKS SCOOOL DISTRICT

By: _____
Francis J. Hoegen, Esquire
Counsel for John H. Thompson
COUNTY OF BUCKS

By: _____
Jeffrey Garton, Solicitor

**BUCKS COUNTY BOARD OF
ASSESSMENT APPEALS**

By: _____
Donald E. Williams
Assistant County Solicitor

By: _____
Edward Rudolph, Solicitor

IN THE COURT OF COMMON PLEAS OF BUCKS COUNTY, PENNSYLVANIA
CIVIL ACTION – LAW

IN RE: Appeal of John H. Thompson	:	No. 11-10932-26-6
	:	
From Bucks County Board of	:	
Assessment Appeals	:	
Tax Parcel No. 34-004-009-001	:	
	:	
Municipality: Plumstead Township	:	ASSESSMENT APPEAL
Assessment for Year 2012	:	
	:	
Property of John H. Thompson	:	

ORDER

AND NOW, this ____ day of _____, 2014, upon consideration of the Stipulation entered into by the parties in this Tax Assessment Appeal, it is ORDERED, ADJUDGED AND DECREED:

1. That the Assessment for Tax Parcel No. 34-004-009-001, located at 6205 Easton Road, is fixed as follows:

Fifty-Nine Thousand Three Hundred Twenty-Five (\$59,325) Dollars effective for the 2012 Tax Year;

Fifty-Six Thousand Seven Hundred (\$56,700) Dollars effective for the 2013 Tax Year;

Fifty-Seven Thousand Seven Hundred Fifty (\$57,750) Dollars effective for the 2014 Tax Year; and

Fifty-Six Thousand Seven Hundred (\$56,700) Dollars effective for the 2015 tax year and subsequent years (until changed or modified in accordance with the Laws of the Commonwealth of Pennsylvania);

2. That Central Bucks School District shall, within forty-five (45) days of the date of entry of this Order, issue real estate tax refunds due John H. Thompson to Hoegen & Associates, P.C., 152 South Franklin Street, Wilkes-Barre, Pennsylvania 18701, which real estate tax refunds shall be determined on the basis of the assessment fixed for the 2012, 2013, 2014 and 2015 Tax Years by this Order;
3. That Bucks County and Plumstead Township shall, within forty-five (45) days of the date of entry of this Order, issue real estate tax refunds due John H. Thompson to Hoegen & Associates, P.C., 152 South Franklin Street, Wilkes-Barre, Pennsylvania 18701, which real estate tax refunds shall be determined on the basis of the assessments fixed for the 2012, 2013, 2014 and 2015 Tax Years by this Order;
4. That no interest shall accrue on the real estate tax refunds due from Bucks County, Plumstead Township and the Central Bucks School District under this Order, including during the period that the real estate tax refunds due from Central Bucks School District for Tax Years 2012,

2013, 2014 and 2015 for the 2012, 2013, 2014 and 2015 Tax Years of the School District;
and

5. That this Appeal shall be marked SETTLED, DISCONTINUED AND ENDED, and each party shall pay their respective costs.

BY THE COURT:

J.

IN THE COURT OF COMMON PLEAS OF BUCKS COUNTY, PENNSYLVANIA
CIVIL ACTION – LAW

IN RE: Appeal of T F Part LP : No. 11-10946-29-6
: :
From Bucks County Board of :
Assessment Appeals :
Tax Parcel No. 09-009-043-001 :
: :
Municipality: Doylestown Township : ASSESSMENT APPEAL
Assessment for Year 2012 :
: :
Property of T F Part LP :
: :

STIPULATION

AND NOW, this ____ day of _____, 2014, the parties to the above-captioned action, hereby stipulate and agree as follows:

1. That the Assessment for Tax Parcel No. 09-009-043-001, located at 450 North Broad Street, is fixed as follows:

One Hundred Thirty-Two Thousand Seven Hundred Seventy-Five (\$132,775) Dollars effective for the 2012 Tax Year;

One Hundred Twenty-Six Thousand, Nine Hundred Sixty (\$126,960) Dollars effective for the 2013 Tax Year;

One Hundred Twenty-Nine Thousand, Two Hundred Fifty (\$129,250) Dollars effective for the 2014 Tax Year;

One Hundred Twenty-Six Thousand Nine Hundred (\$126,900) Dollars effective for the 2015 tax year and subsequent years (until changed or modified in accordance with the Laws of the Commonwealth of Pennsylvania);

2. That Central Bucks School District shall, within forty-five (45) days of the date of entry of the Order on this Stipulation, issue real estate tax refunds due T F Part LP to Hoegen & Associates, P.C., 152 South Franklin Street, Wilkes-Barre, Pennsylvania 18701, which real estate tax refunds shall be determined on the basis of the assessment fixed for the 2012, 2013, 2014 and 2015 Tax Years under the Order entered on this Stipulation;
3. That Bucks County and Doylestown Township shall, within forty-five (45) days of the date of entry of the Order on this Stipulation, issue real estate tax refunds due T F Part LP to Hoegen & Associates, P.C., 152 South Franklin Street, Wilkes-Barre, Pennsylvania 18701, which real estate tax refunds shall be determined on the basis of the assessment fixed for the 2012, 2013, 2014 and 2015 Tax Years under the Order entered on this Stipulation;
4. That no interest shall accrue on the real estate tax refunds due from Bucks County, Doylestown Township and the Central Bucks School District under the Order entered on this Stipulation, including during the period that the real estate tax refunds due from Central

Bucks School District for Tax Years 2012, 2013, 2014 and 2015 for the 2012, 2013, 2014 and 2015 Tax Years of the School District; and

5. That this Appeal shall be marked SETTLED, DISCONTINUED AND ENDED, and each party shall pay their respective costs.

HOEGEN & ASSOCIATES, P.C.

By: _____
Francis J. Hoegen, Esquire
Counsel for T F Part LP

CENTRAL BUCKS SCOOOL DISTRICT

By: _____
Jeffrey Garton, Solicitor

COUNTY OF BUCKS

By: _____
Donald E. Williams
Assistant County Solicitor

**BUCKS COUNTY BOARD OF
ASSESSMENT APPEALS**

By: _____
Edward Rudolph, Solicitor

DOYLESTOWN TOWNSHIP

By: _____
Jeffrey Garton, Solicitor

IN THE COURT OF COMMON PLEAS OF BUCKS COUNTY, PENNSYLVANIA
CIVIL ACTION – LAW

IN RE: Appeal of T F Part LP-	:	No. 11-10946-29-6
	:	
From Bucks County Board of	:	
Assessment Appeals	:	
Tax Parcel No. 09-009-043-001	:	
	:	
Municipality: Doylestown Township	:	ASSESSMENT APPEAL
Assessment for Year 2012	:	
	:	
Property of T F Part LP	:	

ORDER

AND NOW, this ____ day of _____, 2014, upon consideration of the Stipulation entered into by the parties in this Tax Assessment Appeal, it is ORDERED, ADJUDGED AND DECREED:

1. That the Assessment for Tax Parcel No. 09-009-043-001, located at 450 North Broad Street, is fixed as follows:

One Hundred Thirty-Two Thousand Seven Hundred Seventy-Five (\$132,775) Dollars effective for the 2012 Tax Year;

One Hundred Twenty-Six Thousand, Nine Hundred Sixty (\$126,960) Dollars effective for the 2013 Tax Year;

One Hundred Twenty-Nine Thousand, Two Hundred Fifty (\$129,250) Dollars effective for the 2014 Tax Year;

One Hundred Twenty-Six Thousand Nine Hundred (\$126,900) Dollars effective for the 2015 tax year and subsequent years (until changed or modified in accordance with the Laws of the Commonwealth of Pennsylvania);

2. That Central Bucks School District shall, within forty-five (45) days of the date of entry of this Order, issue real estate tax refunds due T F Part LP to Hoegen & Associates, P.C., 152 South Franklin Street, Wilkes-Barre, Pennsylvania 18701, which real estate tax refunds shall be determined on the basis of the assessment fixed for the 2012, 2013, 2014 and 2015 Tax Years by this Order;
3. That Bucks County and Doylestown Township shall, within forty-five (45) days of the date of entry of this Order, issue real estate tax refunds due T F Part LP to Hoegen & Associates, P.C., 152 South Franklin Street, Wilkes-Barre, Pennsylvania 18701, which real estate tax refunds shall be determined on the basis of the assessments fixed for the 2012, 2013, 2014 and 2015 Tax Years by this Order;
4. That no interest shall accrue on the real estate tax refunds due from Bucks County, Doylestown Township and the Central Bucks School District under this Order, including during the period that the real estate tax refunds due from Central Bucks School District for

Tax Years 2012, 2013, 2014 and 2015 for the 2012, 2013, 2014 and 2015 Tax Years of the School District; and

5. That this Appeal shall be marked SETTLED, DISCONTINUED AND ENDED, and each party shall pay their respective costs.

BY THE COURT:

J.

IN THE COURT OF COMMON PLEAS OF BUCKS COUNTY, PENNSYLVANIA
CIVIL ACTION – LAW

IN RE: Appeal of T F Part LP : No. 11-10947-30-6
: :
From Bucks County Board of :
Assessment Appeals :
Tax Parcel No. 08-002-003 :
: :
Municipality: Doylestown Borough : ASSESSMENT APPEAL
Assessment for Year 2012 :
: :
Property of T F Part LP :

STIPULATION

AND NOW, this ____ day of _____, 2014, the parties to the above-captioned action, hereby stipulate and agree as follows:

1. That the Assessment for Tax Parcel No. 08-002-003, located at 651 North Main Street, is fixed as follows:

Thirty-Nine Thousand Two Hundred Eleven (\$39,211) Dollars effective for the 2012 Tax Year;

Thirty-Seven Thousand Four Hundred Seventy-Six (\$37,476) Dollars effective for the 2013 Tax Year;

Thirty-Eight Thousand One Hundred Seventy (\$38,170) Dollars effective for the 2014 Tax Year;

Thirty-Seven Thousand Four Hundred Seventy-Six (\$37,476) Dollars effective for the 2015 tax year and subsequent years (until changed or modified in accordance with the Laws of the Commonwealth of Pennsylvania);

2. That Central Bucks School District shall, within forty-five (45) days of the date of entry of the Order on this Stipulation, issue real estate tax refunds due T F Part LP to Hoegen & Associates, P.C., 152 South Franklin Street, Wilkes-Barre, Pennsylvania 18701, which real estate tax refunds shall be determined on the basis of the assessment fixed for the 2012, 2013, 2014 and 2015 Tax Years under the Order entered on this Stipulation;
3. That Bucks County and Doylestown Borough shall, within forty-five (45) days of the date of entry of the Order on this Stipulation, issue real estate tax refunds due T F Part LP to Hoegen & Associates, P.C., 152 South Franklin Street, Wilkes-Barre, Pennsylvania 18701, which real estate tax refunds shall be determined on the basis of the assessment fixed for the 2012, 2013, 2014 and 2015 Tax Years under the Order entered on this Stipulation;
4. That no interest shall accrue on the real estate tax refunds due from Bucks County, Doylestown Borough and the Central Bucks School District under the Order entered on this Stipulation, including during the period that the real estate tax refunds due from Central

Bucks School District for Tax Years 2012, 2013, 2014 and 2015 for the 2012, 2013, 2014 and 2015 Tax Years of the School District; and

5. That this Appeal shall be marked SETTLED, DISCONTINUED AND ENDED, and each party shall pay their respective costs.

HOEGEN & ASSOCIATES, P.C.

CENTRAL BUCKS SCOOOL DISTRICT

By: _____
Francis J. Hoegen, Esquire
Counsel for T F Part LP
COUNTY OF BUCKS

By: _____
Jeffrey Garton, Solicitor

**BUCKS COUNTY BOARD OF
ASSESSMENT APPEALS**

By: _____
Donald E. Williams
Assistant County Solicitor

By: _____
Edward Rudolph, Solicitor

DOYLESTOWN BOROUGH

By: _____
David F. Conn, Solicitor

IN THE COURT OF COMMON PLEAS OF BUCKS COUNTY, PENNSYLVANIA
CIVIL ACTION – LAW

IN RE: Appeal of T F Part LP : No. 11-10947-30-6
: :
From Bucks County Board of :
Assessment Appeals :
Tax Parcel No. 08-002-003 :
: :
Municipality: Doylestown Borough : ASSESSMENT APPEAL
Assessment for Year 2012 :
: :
Property of T F Part LP :

ORDER

AND NOW, this ____ day of _____, 2014, upon consideration of the Stipulation entered into by the parties in this Tax Assessment Appeal, it is ORDERED, ADJUDGED AND DECREED:

1. That the Assessment for Tax Parcel No. 08-002-003, located at 651 North Main Street, is fixed as follows:

Thirty-Nine Thousand Two Hundred Eleven (\$39,211) Dollars effective for the 2012 Tax Year;

Thirty-Seven Thousand Four Hundred Seventy-Six (\$37,476) Dollars effective for the 2013 Tax Year;

Thirty-Eight Thousand One Hundred Seventy (\$38,170) Dollars effective for the 2014 Tax Year;

Thirty-Seven Thousand Four Hundred Seventy-Six (\$37,476) Dollars effective for the 2015 tax year and subsequent years (until changed or modified in accordance with the Laws of the Commonwealth of Pennsylvania);

2. That Central Bucks School District shall, within forty-five (45) days of the date of entry of this Order, issue real estate tax refunds due T F Part LP to Hoegen & Associates, P.C., 152 South Franklin Street, Wilkes-Barre, Pennsylvania 18701, which real estate tax refunds shall be determined on the basis of the assessment fixed for the 2012, 2013, 2014 and 2015 Tax Years by this Order;
3. That Bucks County and Doylestown Borough shall, within forty-five (45) days of the date of entry of this Order, issue real estate tax refunds due T F Part LP to Hoegen & Associates, P.C., 152 South Franklin Street, Wilkes-Barre, Pennsylvania 18701, which real estate tax refunds shall be determined on the basis of the assessments fixed for the 2012, 2013, 2014 and 2015 Tax Years by this Order;
4. That no interest shall accrue on the real estate tax refunds due from Bucks County, Doylestown Borough and the Central Bucks School District under this Order, including during the period that the real estate tax refunds due from Central Bucks School District for

Tax Years 2012, 2013, 2014 and 2015 for the 2012, 2013, 2014 and 2015 Tax Years of the School District; and

5. That this Appeal shall be marked SETTLED, DISCONTINUED AND ENDED, and each party shall pay their respective costs.

BY THE COURT:

_____ J.

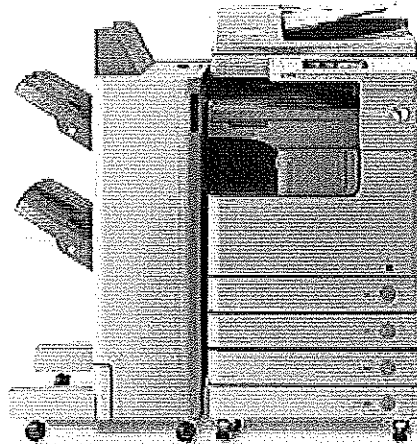
**CENTRAL BUCKS SCHOOL DISTRICT
SCHOOL BOARD MEETING**

February 24, 2015

FOR ACTION: Copier Lease Agreement

The district has five months remaining on a four-year copier fleet lease. The current fleet of copiers are struggling with high copy counts and maintenance issues. This proposal would add machines as needed to schools with high levels of equipment breakdowns. The monthly cost would be \$155 for the equipment lease plus \$70 for the maintenance fees assuming each machine would produce 20,000 copies per month for a total of \$225 per month per machine. The contract for these machines would fall under the state Co-Stars cooperative purchasing program. Estimates are that up to 23 machines may be needed as a bridge to the next copier fleet lease.

In June or July, administration will come back to the Board for authorization to replace the entire fleet of copiers that will be at the end of the four-year lease. Any machine leased during March to July would be incorporated into a district-wide copier fleet lease in July 2015.



RECOMMENDATION:

Authorization to lease up to 23 copiers, as needed, between March and July 2015.

**CENTRAL BUCKS SCHOOL DISTRICT
SCHOOL BOARD MEETING**

February 24, 2015

FOR ACTION: Construction Contracts and Service Agreements

Chalfont Borough contacted the CBSD about extending a Greenway Walking Path through the back portion of the Unami MS property. The Borough is requesting an easement for this path. The Borough is responsible for all costs related to the construction of the path along with the ongoing maintenance costs.

RECOMMENDATION:

- The administration is recommending the granting of an Easement to Chalfont Borough for a walking path behind Unami MS.

PREPARED BY AND RETURN TO:

Prepared by Chalfont Borough.

Return to Sandra Zadell - Chalfont Borough, 40 North Main Street, Chalfont, PA 18914

PARCEL ID NOS.:TMP 07-009-022-002

EASEMENT AGREEMENT

THIS EASEMENT AGREEMENT (this "Agreement") is made this ____ day of _____ 20____, between Central Bucks School District (hereinafter "CSBD") and **CHALFONT BOROUGH**, a political subdivision of the Commonwealth of Pennsylvania (the "Borough").

BACKGROUND

A. CBSD is the owner of a Parcel of ground situate in Chalfont Borough, Bucks County, Pennsylvania (collectively, the "CBSD Parcel"), indexed in the records of the Bucks County Recorder of Deeds at Tax Map Parcel 07-009-022-002 and as more particularly described on Exhibit "A", the Exhibit Plan (2 sheets), which is attached hereto and made a part hereof.

B. The Borough desires to establish a multi-use trail (the "Trail") for use by the general public through and over the CBSD Parcel and CBSD is willing to grant an easement to the Borough for such purposes.

NOW, THEREFORE, the parties hereto, in consideration of the mutual promises contained herein and other good and valuable consideration, the receipt and sufficiency of which are hereby acknowledged, and intending to be legally bound hereby, covenant and agree as follows:

1. Incorporation of Recitals. The recitals set forth above and the exhibits attached hereto are hereby incorporated herein by reference as if set forth in full in the body of this Agreement.
2. Trail Easement. CBSD, for itself and its successors and assigns, hereby grants to the Borough and its successors and assigns, an easement benefiting the Borough over, on, under and upon the CBSD Parcel (the "Trail"), as outlined on the Exhibit Plan (the

"Exhibit Plan") on Exhibit "A" and more particularly described in the legal description(s) contained in Exhibit "B", each attached hereto and made a part hereof (the "Trail Area") for the purposes of constructing, inspecting, improving, operating, repairing, replacing and maintaining the Trail; provided, however, that the Trail Easement shall be under and subject to all conditions, restrictions, easements and agreements affecting the Trail Easement Area which now appear of record and to the following:

(a) Neither CBSD, nor its successors or assigns shall erect or maintain any improvements on, over or under the Trail Easement Area which would affect access to or use of the Trail; provided, however, that CBSD shall be permitted to run utilities under or over the Trail, provided that the running of such utilities does not interfere with the safe operation of the Trail, and further provided that CBSD provides written notice of installation of such utilities to the Borough, completes the installation in an expeditious manner, and restores the Trail to its pre-existing condition following installation of any utilities.

(b) The Trail Easement is not exclusive and CBSD and its successors and assigns reserve the right, after prior written notice to the Borough, to grant such other easements, rights or privileges over, on, under and upon the Trail Easement Area to such other persons and entities as CBSD and its successors and assigns may elect, so long as such easements, rights or privileges do not interfere with either (i) access to or the use of the Trail, or (ii) the safe use of the Trail as a hiking and biking trail.

(c) If the Trail Easement Area traverses any private roadways owned by CBSD, CBSD reserves the right to impose any traffic and safety rules and regulations with respect to such areas deemed necessary by CBSD.

(d) CBSD shall have the right to close or limit access to the Trail Easement Area during such times when CBSD is performing operations that may pose a threat to health and safety including, without limitation, during times when CBSD is constructing or repairing facilities located on CBSD Parcels and other parcels owned by CBSD near the Trail Easement Area. CBSD shall only close or limit access to the Trail Easement Area for such periods of time as are necessary to remove any threat to health and safety and, during all periods of such closure or limited access, CBSD shall place conspicuous notice of such closure or limited access at the points where the Trail enters/exits CBSD Parcels.

(e) It is specifically understood and agreed that any impervious surface area created on the CBSD property as a result of the construction and maintenance of the Trail identified herein, shall and is excluded from any calculations of impervious surface area for any future construction and/or land development of

the CBSD property by the current or any subsequent owner(s) of TMP 07-009-022-002.

3. Temporary Construction Easement. CBSD hereby grants to the Borough a non-exclusive easement and right to use an additional five (5) feet of the CBSD Parcel measured from the limit of the trail easement granted herein, as may be reasonably required to provide temporary access and construction period storage and staging of construction trailers, building materials and equipment and an access route for construction vehicles (the "Temporary Construction Easement"). The Temporary Construction Easement may be used only during and in connection with the initial construction of the Trail. This temporary easement right shall be exercised by the Borough so as not to unreasonably interfere with CBSD's normal operations. The Borough shall expeditiously complete any construction work that requires the exercise of this easement right and, upon completion of such work, promptly clean, repair and restore the Temporary Construction Easement Areas to substantially their condition that existed prior to Tenant's use of such Temporary Construction Easement Areas as reasonably required by CBSD.

4. Construction Obligations and Covenants. Whenever pursuant to this Agreement the Borough constructs any improvements in connection with the use and enjoyment of the easements granted herein, it is understood and agreed that such construction shall be performed in accordance with the following requirements:

(a) CBSD shall have the right to approve the plans and specifications for any improvements to be constructed within the Trail Easement Area, which approval shall not be unreasonably withheld, conditioned or delayed. If CBSD does not object to the plans and specifications within thirty (30) days after receipt, the plans and specifications shall be deemed approved.

(b) All such construction shall be performed in a good and workmanlike manner in accordance with sound engineering practice and in compliance with all applicable laws, ordinances, rules and regulations of all local, state and federal agencies and authorities having jurisdiction thereof, with the Borough hereby agreeing to obtain prior to the commencement of such construction all permits, licenses and other approvals required in connection therewith from all governmental agencies and authorities having jurisdiction and to deliver copies thereof to CBSD.

(c) All such improvements shall be constructed and completed free of any mechanic's or materialman's lien, and the Borough hereby agrees (i) to indemnify and hold CBSD harmless from and against all loss, damage, cost, expense, action or cause of action arising from or in connection with any such mechanic's or materialman's lien, including, without limitation, reasonable attorney's fees and expenses and court costs, and (ii) to obtain and maintain the insurance required

pursuant to Section 6 hereof.

(d) All construction of the Trail and any other improvements constructed by the Borough hereunder shall be the responsibility of the Borough and at the Borough's sole cost and expense. Upon the commencement of the construction of the Trail by the Borough, the Borough shall proceed expeditiously to complete the construction of the Trail.

5. Maintenance Obligations and Covenants.

(a) The Borough shall be responsible, at its sole cost and expense, for all repair, maintenance and replacement of the Trail, and any other improvements constructed in the Trail Easement Area by or on behalf of the Borough, to the extent any such repair, maintenance or replacement is necessary to keep the Trail and any other such improvements in a safe and sightly condition. The Borough shall also be responsible for the repair of any damage to CBSD Parcel resulting from the installation, operation, use, maintenance, repair, or replacement of the Trail and the Trail Easement Area. It is understood that the Borough does not intend at this point in time to perform snow removal on the trail during the winter months, and in no event shall CBSD have any obligation to perform snow removal during the winter months or any other maintenance on the trail during the calendar year.

(b) If the Borough fails to perform its repair, maintenance and replacement obligations under this Section 5, CBSD may notify the Borough in writing of such failure. In the further event the Borough fails to remedy the defects set forth in the notice from CBSD within thirty (30) days after receipt of such notice, CBSD shall have the right, but not the obligation, to correct such deficiencies on behalf of and at the expense of the Borough; provided, however, that in the event thirty (30) days is insufficient time in which to cure the default and (i) the Borough is diligently pursuing such cure, (ii) the default can be cured within a reasonable period of time after expiration of the 30-day period, and (iii) the Borough presents CBSD with a plan to cure such default which is reasonably satisfactory to CBSD, CBSD will not pursue any remedies available to it. If CBSD performs any maintenance, repairs and replacements on behalf of the Borough after giving the required notice, CBSD shall have the right to bill the Borough for the direct costs incurred by CBSD.

6. Indemnification and Insurance.

(a) The Borough agrees to indemnify and defend CBSD and to hold CBSD harmless from and against any loss, claim, damage, cost, expense, liability, action or cause of action, including, without limitation, reasonable attorneys' fees

and expenses and court costs, arising out of or incurred in connection with the use of the Trail Easement or the Temporary Construction Easement by the Borough and its agents, employees, contractors, servants, licensees and invitees (including, without limitation, members of the general public making use of the Trail Easement) unless the loss, claim, damage, cost, expense or liability is caused by the negligence or willful misconduct of CBSD, its employees, officers, directors, agents, contractors, servants or licensees.

(b) From and after the date this Agreement is fully executed by the parties hereto, the Borough shall carry and maintain general liability insurance or group self-insurance on an occurrence basis against claims for bodily injuries to persons (including death) and damage to property, occasioned by, or arising from, the existence, use and/or exercise of the Trail Easement and the Temporary Construction Easement. The Borough shall choose, in its sole discretion, to carry and maintain such insurance or group self-insurance through either (i) an insurer licensed to do business in the Commonwealth of Pennsylvania; or (ii) a group self-insurance trust, such as the Delaware Valley Insurance Trust. Such insurance or group self-insurance shall be maintained under a policy or coverage pursuant to which CBSD shall be named as an additional insured or covered party.

(c) The insurance or group self-insurance required by Section 6(b) shall afford protection with limits of liability in amounts not less than Two Million Dollars (\$2,000,000.00) combined single limit each occurrence with respect to bodily injuries to persons (including death) and property damage.

(d) The Borough shall provide CBSD, upon its reasonable request, with certificate(s) evidencing that all the insurance or group self-insurance coverage required by this Section 6 is in full force and effect. The insurance or group self-insurance required by this Section 6 shall contain an agreement by the insurer or group self-insurance trust to give at least ten (10) days' prior written notice to CBSD in the event of cancellation or non-renewal of such insurance or group self-insurance. The Borough will provide an insurance certificate to CBSD each year.

(e) Nothing contained in this Section 6 shall be deemed to prohibit the Borough from obtaining insurance or group self-insurance which may cover any other property, premises, or liabilities of the Borough, in addition to the coverage to be afforded pursuant to this Section 6.

7. Relocation of the Trail Easement. If either (a) the location of the Trail Easement Area, in the reasonable judgment of CBSD, interferes with CBSD's operations and/or activities, or (b) the functioning of the Trail Easement Area is materially impacted by alterations and/or relocations of existing roads and driveways (and entrances and exits thereto) located on or adjacent to CBSD Parcels, then CBSD and the Borough shall

reasonably cooperate with each other to cause the Trail Easement Area to be relocated in a manner satisfactory to address the foregoing concerns. If the Trail Easement Area is relocated pursuant to subsection (a), CBSD shall be responsible, at its sole cost and expense, for constructing any improvements necessitated by the relocation of the Trail Easement Area and if the Trail Easement Area is relocated pursuant to subsection (b), the Borough shall be responsible, at its sole cost and expense, for constructing any improvements necessitated by the relocation of the Trail Easement Area. If the Trail Easement Area is ever relocated subsequent to the date of this Agreement, the parties hereto shall promptly execute and record an amendment to this Agreement identifying the relocated Trail Easement Area.

8. Notices. All notices, requests and consents herein required or permitted from either party to the other shall be in writing and shall be sent by nationally-recognized courier guaranteeing overnight delivery, or by mailing the same by registered or certified mail, postage prepaid, return receipt requested, at the addresses indicated below or to such other address as the party to receive same may designate by notice to the other. All such notices, requests and other communications shall be deemed to have been sufficiently given for all purposes on the day after the date of deposit with a courier guaranteeing overnight delivery, or if deposited in the United States mail, the date when the notice is either received or rejected by the addressee. All such notices shall be addressed as follows:

(a) If intended for the Borough:
Chalfont Borough
40 North Main Street, Chalfont PA. 18914
Attn: Borough Manager

(b) If intended for CBSD:
Superintendent
Central Bucks School District
20 Welden Drive, Doylestown, PA 18901

or to such other addresses or entities as either party hereto may from time to time direct by notice to the other party hereto given as provided above.

9. Amendments. This Agreement may not be altered, modified, amended or terminated except by an instrument in writing duly executed by the parties then bound by this Agreement and in recordable form, which shall be recorded promptly and the expense thereof shall be borne equally by all parties then bound hereunder.

10. Headings. The headings used in this Agreement are for convenience and reference only and are not a part of this Agreement and do not in any way control, define, limit, or add to the terms, covenants, conditions and provisions hereof.

11. Governing Law. This Agreement shall be construed, interpreted and governed by

the laws of the Commonwealth of Pennsylvania.

12. Binding Effect. This Agreement shall be binding upon and shall inure to the benefit of the parties hereto and their respective successors, heirs and/or assigns.

13. Covenants Running with the Land; Easements to be Private.

(a) It is intended that the covenants and agreements contained herein are to be covenants running with the land and affirmatively enforceable against the land and any grantee, successor and assign thereof.

(b) Notwithstanding the fact that it is understood that the Borough will permit members of the public to use the Trail and the Trail Easement, neither the granting of any easement hereunder nor the use and enjoyment thereof pursuant to the provisions of this Agreement shall be deemed in any way to create or confer in or on any member of the public any estate or interest therein.

14. Entire Agreement. This Agreement contains the entire agreement among the parties hereto with respect to the subject matter hereof, and there are no other terms, conditions, provisions, understandings, statements, or representations, express or implied, concerning the subject matter hereof.

15. Counterparts. This Agreement may be executed any number of counterparts. All such counterparts shall be deemed to be originals and shall together constitute but one and the same instrument.

In Witness hereof, intending to be legally bound hereby, the parties have set their hands and seals on the date and in the year first written above.

CHALFONT BOROUGH

By: John Engel, Council President

Date: _____

CENTRAL BUCKS SCHOOL DISTRICT

Date: _____

By:

COMMONWEALTH OF PENNSYLVANIA

Position: _____

:

: ss.

:

COUNTY OF _____

On the ____ day of _____, A.D., 20____, before me, the undersigned officer, personally appeared _____, who acknowledged himself/herself to be the _____ and that he/she as such officer being authorized to do so, executed the foregoing instrument for the purposes therein contained.

IN WITNESS WHEREOF, I hereunto set my hand and official seal.

Notary Public

COMMONWEALTH OF PENNSYLVANIA

:

: ss.

:

COUNTY OF _____

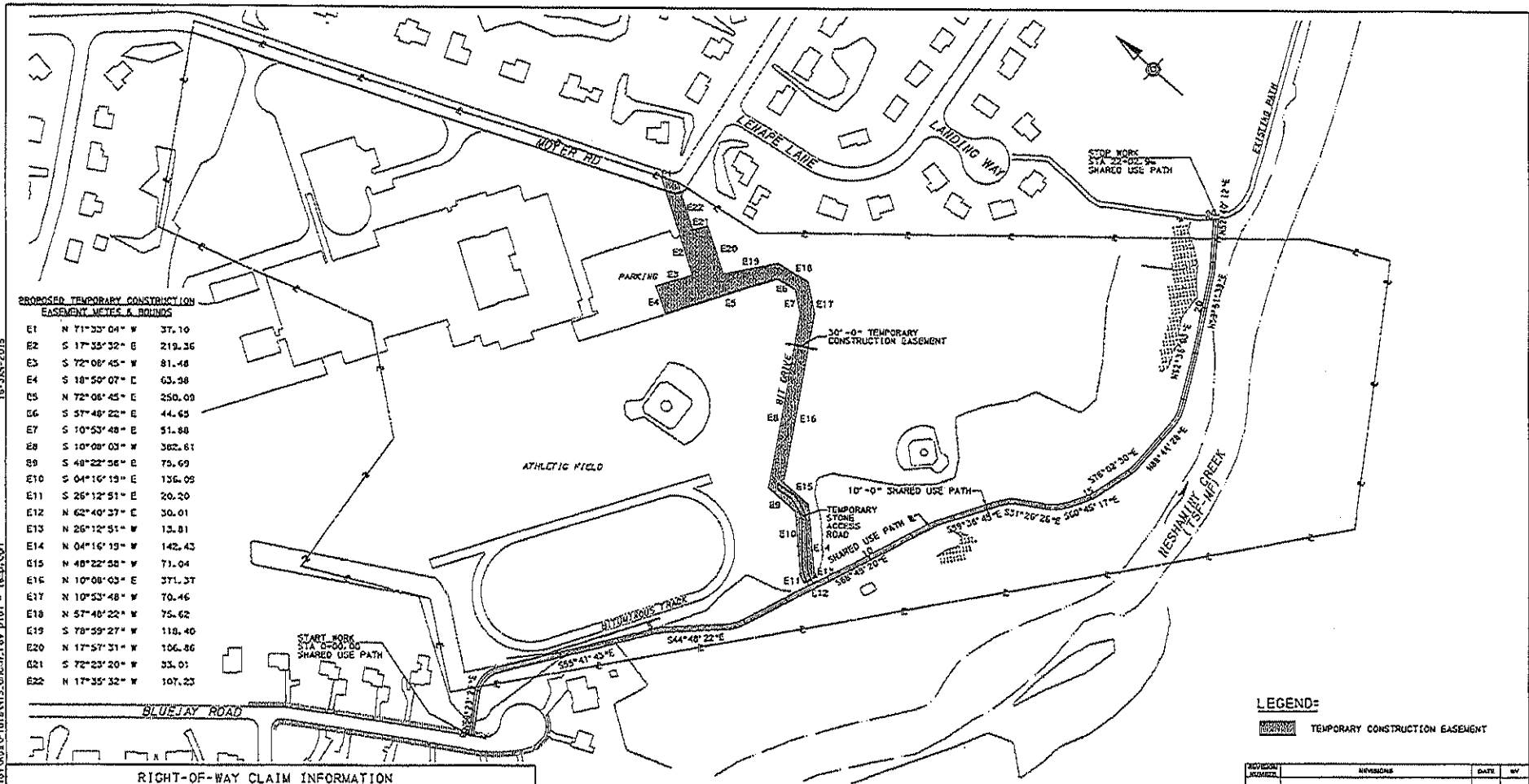
On this ____ day of _____, 20____, before me, the undersigned officer, personally appeared _____ who acknowledged themselves to be the _____ of Chalfont Borough, and acknowledged that they are authorized to execute this document on behalf of the Borough of Chalfont and that they executed the same for the purposes therein contained.

IN WITNESS WHEREOF, I hereunto set my hand and official seal.

Notary Public

15-JAN-2015

E:\131810\Neshaminy Trail Phase 3\131810\131810\131810\131810.dwg pl 01 - 131810.dwg



PROPOSED TEMPORARY CONSTRUCTION EASEMENT NOTES & BOUNDS

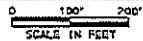
E1	N 71°33'04" W	37.10
E2	S 17°35'32" E	219.36
E3	S 72°08'45" W	81.48
E4	S 18°50'07" E	63.38
E5	N 72°08'45" E	250.09
E6	S 37°48'22" E	44.65
E7	S 10°53'48" E	51.88
E8	S 10°08'03" W	382.61
E9	S 48°22'56" E	75.69
E10	S 04°16'13" E	136.05
E11	S 25°12'51" E	20.20
E12	N 62°40'37" E	30.01
E13	N 25°12'51" W	13.81
E14	N 04°16'13" W	142.43
E15	N 48°22'58" W	71.04
E16	N 10°08'03" E	371.37
E17	N 10°53'48" W	70.46
E18	N 57°48'22" W	75.62
E19	S 78°59'27" W	118.40
E20	N 17°57'31" W	106.86
E21	S 72°23'20" W	33.01
E22	N 17°35'32" W	107.23

RIGHT-OF-WAY CLAIM INFORMATION

STATE ROUTE#	N/A	SEC. NO.	N/A	CHALFONT BOROUGH	BUCKS COUNTY
PARCEL NO.	N/A	SHEET NO.	N/A	CLAIM NO.	
PROPERTY OWNER: SI CENTRAL BUCKS SCHOOL DISTRICT					
GRANTOR: SI CENTRAL BUCKS JOINT SCHOOL BUILDING AUTHORITY					

DEED BOOK	PAGE	AREAS	SF	REQUIRED AREA	SF
DATE OF DEED	01-16-2014	DEED	-	TRAIL EASEMENT	4,337.5 S
DATE OF RECORD	04-10-2014	CALCULATED	2076922.2		
CONSIDERATION	\$1.00	ADVERSES	-		
TAX STAMPS	\$0.00	EXEMPTIONS	27370.3		
TAX PARCEL NO.	1-9-2007	LEGAL R/W	2049231.7		
		EFFECTIVE	2049231.7		
		TOTAL REQ'D R/W	-	VERIFICATION DATE	01-01-2015
		TOTAL RESIDUE	2049551.7	DRAWN BY	MICHAEL BAKER JR., INC.
		RESIDUE I.T.	-	SCALE	0 100 200 FEET
		RESIDUE RT.	2049551.7		

PROPERTY PLOT PLAN



LEGEND:

TEMPORARY CONSTRUCTION EASEMENT

REVISION	DESCRIPTION	DATE	BY

Michael Baker

INTERNATIONAL
PLANS PREPARED BY
MICHAEL BAKER JR., INC.
201 GIBBULTON ROAD SUITE 100
HORSHMAN, PA 19044

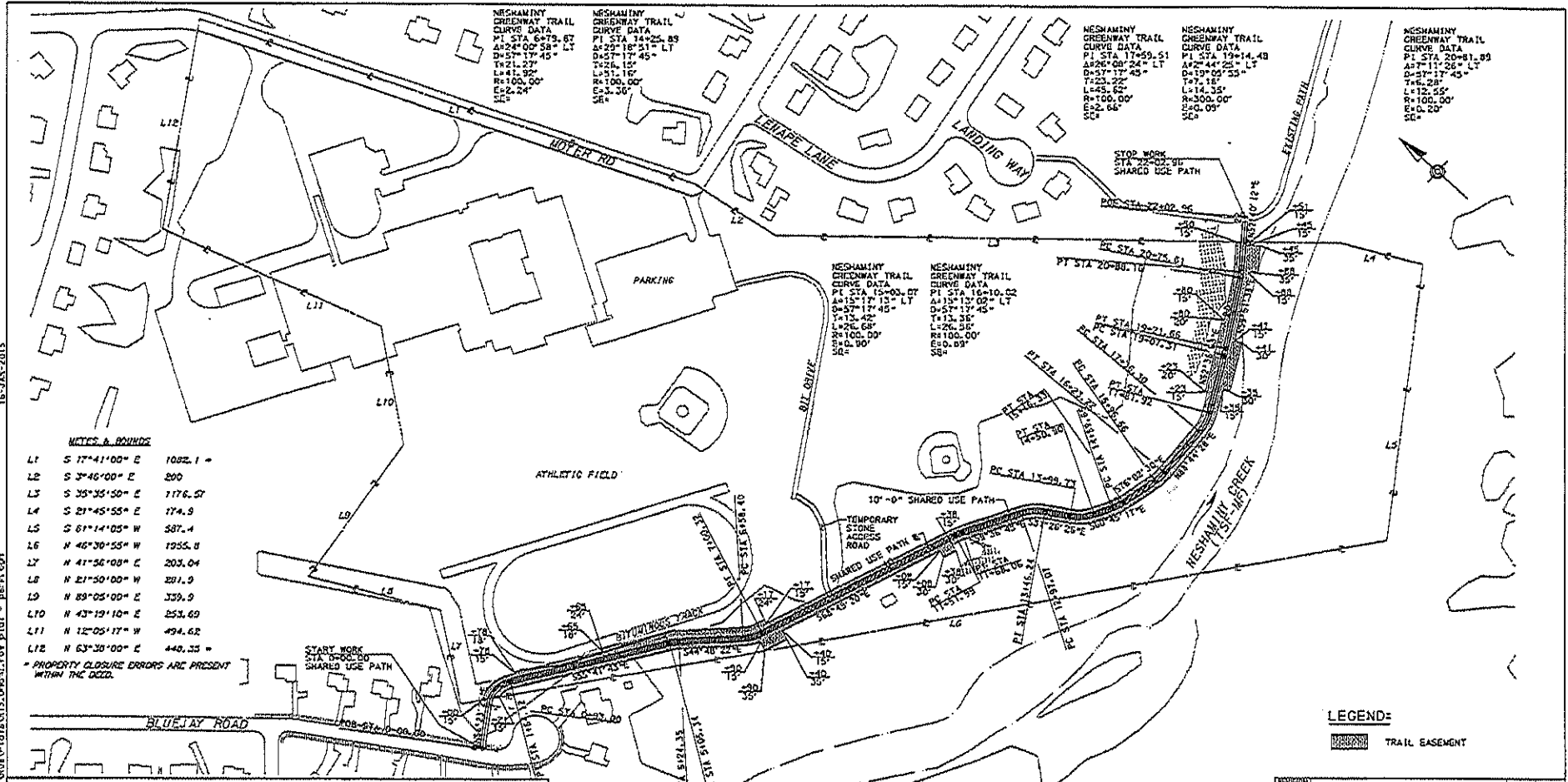
NESHAMINY GREENWAY TRAIL
CHALFONT BOROUGH, BUCKS COUNTY, PENNSYLVANIA
CHALFONT BOROUGH
40 N. MAIN STREET,
CHALFONT, PA 18914

DATE	01/14/2015	SHEET	
DRAWN BY	SEP	NO. OF SHEETS	1 OF 304

ALL DIMENSIONS MUST BE VERIFIED BY CONTRACTOR AND OWNER MUST BE NOTIFIED OF ANY DISCREPANCIES BEFORE PROCEEDING WITH THE WORK.

16-JAN-2015

1613919180.Neshaminy Trail Easement.dwg - REV: USA: GSD



MEAS & BOUNDS

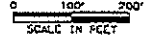
L1	S 17°41'00" E	1092.1 =
L2	S 3°46'00" E	200
L3	S 35°35'50" E	1776.57
L4	S 21°45'55" E	174.9
L5	S 61°14'05" W	587.4
L6	N 46°30'55" W	1955.8
L7	N 41°56'08" E	203.04
L8	N 21°50'00" W	201.9
L9	N 89°05'00" E	359.9
L10	N 43°19'10" E	253.69
L11	N 12°05'17" W	494.62
L12	N 63°38'00" E	440.35 =

= PROPERTY CLOSURE ERRORS ARE PRESENT WITHIN THE DEED.

RIGHT-OF-WAY CLAIM INFORMATION

STATE ROUTE#	N/A	SEC. NO#	N/A	CHALFONT BOROUGH	BUCKS COUNTY
PARCEL NO.	J22	SHEET NO.	N/A	CLAIM NO.	
PROPERTY OWNER(S)	CENTRAL BUCKS SCHOOL DISTRICT				
GRANTOR(S)	CENTRAL BUCKS SCHOOL BUILDING AUTHORITY				

PROPERTY PLOT PLAN



DEED BOOK PAGE	AREAS	SF	REQUIRED AREA	SF
DATE OF DEED 04-16-2014	DEED	-	TRAIL EASEMENT	69926.6
DATE OF RECORD 02-16-2014	CALCULATED	207622.7		
CONSIDERATION \$1.00	ADJUSTED	-		
TAX STAMPS \$0.00	EXCEPTIONS	-		
TAX PARCEL NO. 7-2-22-7	LEGAL R/W	27776.5		
	EFFECTIVE	2049551.7		
	TOTAL RES'D R/W	-	VERIFICATION DATE 01-16-2015	
	TOTAL RESIDUE	2049551.7	DRAWN BY MICHAEL BAKER JR., INC.	
	RESIDUE LT.	-	SCALE 0 100 200 FEET	
	RESIDUE RT.	2049551.7		

<p>NESHAMINY GREENWAY TRAIL CURVE DATA PI STA 1+33.41 Δ=67°54'52" RT D=95'29'35" T=40.41' L=71.12' R=60.00' E=12.34' S=0°</p>	<p>NESHAMINY GREENWAY TRAIL CURVE DATA PI STA 2+14.88 Δ=101°53'21" RT D=57'17'45" T=9.53' L=19.01' R=100.00' E=0.45' S=0°</p>	<p>NESHAMINY GREENWAY TRAIL CURVE DATA PI STA 11+60.04 Δ=8°12'35" RT D=57'17'45" T=8.05' L=16.97' R=100.00' E=0.32' S=0°</p>	<p>NESHAMINY GREENWAY TRAIL CURVE DATA PI STA 13+22.16 Δ=26°10'13" RT D=57'17'45" T=23.09' L=49.17' R=100.00' E=3.10' S=0°</p>
---	---	--	--

LEGEND



REVISION NUMBER	REVISIONS	DATE	BY

Michael Baker INTERNATIONAL
 PLANNED BY MICHAEL BAKER JR., INC.
 200 GIBBSVILLE ROAD SUITE 100
 HORSHAM, PA 19044

NESHAMINY GREENWAY TRAIL
 CHALFONT BOROUGH, BUCKS COUNTY, PENNSYLVANIA
CHALFONT BOROUGH
 40 N. MAIN STREET
 CHALFONT, PA 18814

DATE: 1/14/2015
 DRAWN BY: SEP
 SHEET: 1 OF 30

UNAMI EASEMENT PLAN

APPROVED: [Signature]

ALL DIMENSIONS MUST BE VERIFIED BY CONTRACTOR AND OWNER MUST BE NOTIFIED OF ANY DISCREPANCIES BEFORE PROCEEDING WITH THE WORK.

Legal Description of Central Bucks School District Property

Legal Description of Temporary Construction Easement on Central Bucks School District Property

Beginning at the eastern point at the bend in Moyer Road on the property line now or formerly of Central Bucks School District; (1) following the property line North 71 degrees 33 minutes 04 seconds West 37.10 feet to a point; (2) thence leaving the property line South 17 degrees 35 minutes 32 seconds East 219.36 feet to a point; (3) thence extending South 72 degrees 08 minutes 45 seconds West 81.48 feet to a point; (4) thence extending South 18 degrees 50 minutes 07 seconds East 63.98 feet to a point; (5) thence extending North 72 degrees 08 minutes 45 seconds East 250.09 feet to a point; (6) thence extending South 57 degrees 48 minutes 22 seconds East 44.65 feet to a point; (7) thence extending South 10 degrees 53 minutes 48 seconds East 51.88 feet to a point; (8) thence extending South 10 degrees 08 minutes 03 seconds West 382.61 feet to a point; (9) thence extending South 48 degrees 22 minutes 58 seconds East 75.69 feet to a point; (10) thence extending South 04 degrees 16 minutes 19 seconds West 136.09 feet to a point; (11) thence extending South 26 degrees 12 minutes 51 seconds East 20.20 feet to a point; (12) thence extending North 62 degrees 40 minutes 37 seconds East 30.01 feet to a point; (13) thence extending North 26 degrees 12 minutes 51 seconds West 13.81 feet to a point; (14) thence extending North 04 degrees 16 minutes 19 seconds West 142.43 feet to a point; (15) thence extending North 48 degrees 22 minutes 58 seconds West 71.04 feet to a point; (16) thence extending North 10 degrees 08 minutes 03 seconds East 371.37 feet to a point; (17) thence extending North 10 degrees 53 minutes 48 seconds West 70.46 feet to a point; (18) thence extending North 57 degrees 48 minutes 22 seconds West 75.62 feet to a point; (19) thence extending South 78 degrees 59 minutes 27 seconds West 118.40 feet to a point; (20) thence extending North 17 degrees 57 minutes 31 seconds West 106.86 feet to a point; (21) thence extending South 72 degrees 23 minutes 20 seconds West 33.01 feet to a point; (22) thence extending North 17 degrees 35 minutes 32 seconds West 107.23 feet to the first mentioned point and place of beginning.

Legal Description of Trail Easement on Central Bucks School District Property

Beginning at a point on the property line now or formerly of Lawrence Alles and Cheryl Alles said point being 45.20 feet south of the western most point of the Central Bucks School District property; (1) leaving the property line curving clockwise 79.90 feet along a radius of 75.00 feet to a point; (2) thence extending South 55 degrees 41 minutes 43 seconds East 14.25 feet to a point; (3) thence extending North 34 degrees 18 minutes 17 seconds East 3.00 feet to a point; (4) thence extending South 55 degrees 41 minutes 43 seconds East 187.26 feet to a point; (5) thence extending North 34 degrees 18 minutes 17 seconds East 6.00 feet to a point; (6) thence extending South 55 degrees 41 minutes 43 seconds East 139.71 feet to a point; (7) thence curving clockwise 23.57 feet along a radius of 124.00 feet to a point; (8) thence extending South 44 degrees 48 minutes 22

seconds East 134.05 feet to a point; (9) thence curving counterclockwise 31.86 feet along a radius of 76.00 feet to a point; (10) thence extending South 68 degrees 49 minutes 20 seconds East 16.78 feet to a point; (11) thence extending South 21 degrees 10 minutes 40 seconds West 9.00 feet to a point; (12) thence extending South 68 degrees 49 minutes 20 seconds East 434.89 feet to a point; (13) thence curving clockwise 18.49 feet along a radius of 115.00 feet to a point; (14) thence extending South 59 degrees 36 minutes 45 seconds East 129.01 feet to a point; (15) thence curving clockwise 56.54 feet along a radius of 115.00 feet to a point; (16) thence extending South 31 degrees 26 minutes 26 seconds East 53.50 feet to a point; (17) thence curving counterclockwise 43.49 feet along a radius of 85.00 feet to a point; (18) thence extending South 60 degrees 45 minutes 17 seconds East 38.75 feet to a point; (19) thence curving counterclockwise 22.68 feet along a radius of 85.00 feet to a point; (20) thence extending South 76 degrees 02 minutes 30 seconds East 80.33 feet to a point; (21) thence curving counterclockwise 22.58 feet along a radius of 85.00 feet to a point; (22) thence extending North 88 degrees 44 minutes 28 seconds East 113.08 to a point; (23) thence curving counterclockwise 38.78 feet along a radius of 85.00 to a point; (24) thence extending North 62 degrees 36 minutes 03 seconds East 41.65 feet to a point; (25) thence extending North 27 degrees 23 minutes 57 seconds West 5.00 feet to a point; (26) thence extending North 62 degrees 36 minutes 03 seconds East 83.74 feet to a point; (27) thence curving counterclockwise 13.39 feet along a radius of 280.00 feet to a point; (28) thence extending North 59 degrees 51 minutes 38 seconds East 58.70 feet to a point; (29) thence extending South 30 degrees 08 minutes 22 seconds East 5.00 feet to a point; (30) thence extending North 59 degrees 51 minutes 38 seconds East 95.26 feet to a point; (31) thence curving counterclockwise 10.67 feet along a radius of 85.00 feet to a point; (32) thence extending North 52 degrees 40 minutes 12 seconds East 61.64 feet to a point; (33) thence extending South 40 degrees 57 minutes 51 seconds East 30.06 feet to a point; (34) thence extending South 52 degrees 40 minutes 12 seconds West 6.19 feet to a point; (35) thence extending South 37 degrees 19 minutes 48 seconds East 20.00 feet to a point; (36) thence extending South 52 degrees 40 minutes 12 seconds West 57.36 feet to a point; (37) thence extending North 37 degrees 19 minutes 48 seconds West 20.00 feet to a point; (38) thence curving clockwise 14.43 feet along a radius of 115.00 feet to a point; (39) thence extending South 59 degrees 51 minutes 38 seconds 134.15 feet to a point; (40) thence extending South 30 degrees 08 minutes 22 seconds East 15.00 feet to a point; (41) thence extending South 59 degrees 51 minutes 38 seconds West 19.81 feet to a point; (42) thence curving clockwise 15.78 feet along a radius of 330.00 feet to a point; (43) thence extending South 62 degrees 36 minutes 03 seconds West 71.88 feet to a point; (44) thence extending North 27 degrees 23 minutes 57 seconds West 15.00 feet to a point; (45) thence extending South 62 degrees 36 minutes 03 seconds West 53.51 feet to a point; (46) thence curving clockwise 52.47 feet along a radius of 115.00 feet to a point; (47) thence extending South 88 degrees 44 minutes 28 seconds West 113.08 feet to a point; (48) thence curving clockwise 30.54 feet along a radius of 115.00 feet to a point; (49) thence extending North 76 degrees 02 minutes 30 seconds West 80.33 feet to a point; (50) thence curving clockwise 30.68 feet along a radius of 115.00 feet to a point; (51) thence extending North 60 degrees 45 minutes 17 seconds West 38.75 feet to a point; (52) thence curving clockwise 58.84 feet along a radius of 115.00 feet to a point; (53) thence extending North 31 degrees 26 minutes 26 seconds West 53.50 feet to a point; (54) thence curving counterclockwise

41.79 feet along a radius of 85.00 feet to a point; (55) thence extending North 59 degrees 36 minutes 45 seconds West 129.01 feet to a point; (56) thence curving counterclockwise 13.66 feet along a radius of 85.00 feet to a point; (57) thence extending North 68 degrees 49 minutes 20 seconds West 13.88 feet to a point; (58) thence extending South 21 degrees 10 minutes 40 seconds West 15.00 feet to a point; (59) thence extending North 68 degrees 49 minutes 20 seconds West 29.54 feet to a point; (60) thence extending North 21 degrees 10 minutes 40 seconds East 15.00 feet to a point; (61) thence extending North 68 degrees 49 minutes 20 seconds West 368.26 feet to a point; (62) thence extending South 21 degrees 10 minutes 40 seconds West 20.00 feet to a point; (63) thence extending North 68 degrees 49 minutes 20 seconds West 39.98 feet to a point; (64) thence curving clockwise 13.09 feet along a radius of 135.00 feet to a point; (65) thence extending North 26 degrees 43 minutes 56 seconds East 20.00 feet to a point; (66) thence curving clockwise 37.05 feet along a radius of 115.00 feet to a point; (67) thence extending North 44 degrees 48 minutes 22 seconds West 134.05 feet to a point; (68) thence curving counterclockwise 16.15 feet along a radius of 85.00 feet to a point; (69) thence extending North 55 degrees 41 minutes 43 seconds West 341.22 feet to a point; (70) thence curving counterclockwise 32.28 feet along a radius of 45.00 feet to a point; (71) thence extending North 51 degrees 52 minutes 56 seconds West 36.12 feet to the first mentioned point and place of beginning.

**CENTRAL BUCKS SCHOOL DISTRICT
SCHOOL BOARD MEETING**

February 24, 2015

FOR ACTION: School Board Policy for First Read

School Board Policy 616 – Payment of Bills

Changes to this policy reflect needed wording to address the approval process of employee expenses and approval of expenses of the Superintendent. Also included is a provision to move from a process of the ratification approval of payments by the Board to actual Board Approval of payments prior to their release, with specific exceptions, as indicated in the revised policy. The policy was also updated to reflect authorized signers to be the Board Secretary and the Board Treasurer.

RECOMMENDATION:

The administration is recommending that School Board Policy 616 – Payment of Bills be tabled so that the proposed policy can be posted on-line for public review.

CENTRAL BUCKS SCHOOL DISTRICT

SECTION: FINANCES

TITLE: PAYMENT OF BILLS

ADOPTED: July 23, 2002

REVISED: October 22, 2013

<p>1. Purpose</p> <p>2. Authority SC 439, 607, 1155</p> <p>SC 427, 439</p> <p>3. Delegation of Responsibility</p>	<p style="text-align: center;">616. PAYMENT OF BILLS</p> <p>It is the Board's intent to direct prompt payment of bills but at the same time to ensure that due care has been taken in the review of district bills.</p> <p>The Board shall be provided with a detailed list of pending payments for approval prior to the release of the payments. Each bill or obligation of this district must be fully itemized, verified and ratified approved by the Board before a check can be drawn for its payment, except that the Board Treasurer is permitted to draw payment orders for:</p> <ol style="list-style-type: none"> 1. The prompt payment of items that will accrue to the district's advantage. 2. Progress payments to contractors specified in a contract approved by the Board. 3. Orders to cover approved payrolls, associated benefits, and agency account deposits. 4. Utility bills. 5. Payment of bills in months the Board meets only once: The Board shall have the opportunity to notify the Business Administrator, within five days, of any payment(s) they wish to have held for further review prior to release. Any payments that are held will not be released until the payment has been Board approved in a subsequent Board meeting. 6. Re-issue of a previously approved check. <p>It shall be the responsibility of the Business Administrator or designee upon receipt of an invoice to verify that the purchase invoice is in order, goods were received in acceptable condition or services were satisfactorily rendered, funds are available to cover the payment, the Board had budgeted for the item, and invoice is for the amount contracted. At a minimum, employee expenses shall be reviewed by the next in line supervisor. Expenses of the Superintendent shall be reviewed and approved by the School Board President and Vice President prior to payment and ratification approval by the board.</p>
---	--

	<p>Should the an invoice vary from the acknowledged purchase order, the administration Business Administrator or designee shall document on the invoice the reason for such variance.</p>
<p>SC 607, 609, 687 Pol. 612</p>	<p>Should funds not be available in the account to which a proposed purchase will be charged, the Director of Finance Business Administrator or designee shall determine the overage and request the Board make a legal transfer to cover it.</p> <p>All claims for payment shall be submitted to the Board and recorded in the minutes of the Board meeting.</p> <p>The list of bills for payment report shall include for each:</p> <ol style="list-style-type: none"> 1. Check number. 2. Check date. 3. Vendor. 4. Amount of remittance. <p>Prior to the Board's consideration of the bills for payment report, each invoice shall be reviewed by the purchasing and accounting departments for accuracy, proper expense codes, and authorization. The Board will be provided with a cash requirements report that includes description of purchase.</p>
<p>SC 439</p>	<p>Upon administrative approval of an order, the Business Administrator or designee Treasurer shall prepare a check or authorize the preparation of a check or Automated Clearing House (ACH) transaction for payment and cancel the commitment placed against the appropriate account.</p>
<p>SC 427, 433, 439</p>	<p>All checks approved by the Board shall be signed by the Board Secretary and the Treasurer.</p>
<p>4. Guidelines 65 P.S. Sec. 302</p>	<p>Signatures of the Treasurer and Board Secretary may be engraved on a facsimile signature plate, computer chip, or stamp.</p>
<p>Title 61 Sec. 32.23 72 P.S. Sec. 7204</p>	<p><u>Sales Tax</u></p> <p>The district is exempt from sales tax on the purchase of tangible, personal property or services that are sold or used by the district. The district shall control use of its sales tax exemption number issued by the Department of Revenue, in compliance with established regulations. The exemption number shall be used only when buying property or services for district use.</p>

<p>Title 61 Sec 32.23 72 P.S. Sec 7208 Pol. 618</p>	<p>The district shall obtain a sales tax license number for school organizations who purchase items to be resold.</p>
<p>November 2003 Building Committee</p>	<p>In order to monitor these activities, the Business Administrator shall develop procedures to assure coordination and accumulation of information and proper reporting and remittance to the Department of Revenue.</p>
	<p><u>Construction</u></p>
	<p>Change Orders from -\$5,000 to \$ 5,000: May be approved & signed by the Project's Construction Coordinator</p>
	<p>Change Orders from -\$15,000 to - \$5,001 or from \$ 5,001 to \$15,000: May be approved & signed by the Director of Operations</p>
	<p>Change Orders from -\$25,000 to -\$15,001 or from \$15,001 to \$25,000: Approved by the Operations Committee and signed by the Operations Committee Chairperson</p>
	<p>Change Orders less than -\$25,000 or greater than \$25,000: Approved by the Board of School Directors and Signed by the Board President</p>
	<p>Urgent Change Order Approvals – Time Sensitive and greater than +/- \$15,000 Recommended by the Director of Operations (or the Assistant Director) and approved by the Superintendent and/or the Building Committee Chairperson.</p>
	<p>References: School Code – 24 P.S. Sec. 427, 428, 433, 439, 607, 608, 609, 610, 687, 1155 Department of Revenue Regulations – 61 PA Code Sec. 32.23 Uniform Facsimile Signature of Public Officials Act – 65 P.S. Sec. 302 Exclusion From Tax – 72 P.S. Sec. 7204, 7208</p>

**CENTRAL BUCKS SCHOOL DISTRICT
SCHOOL BOARD MEETING**

February 24, 2015

FOR ACTION: Personnel Items

The following pages include resignations, retirements, and unpaid leaves of absence; appointments, long-term substitute teachers, long-term per diem substitute teachers, classification changes, community school staff, Summer Band Director, per diem substitute teachers, per diem substitute bus drivers, substitute van drivers, substitute custodians, and substitute educational assistants.

RECOMMENDATION:

The administration is recommending that the Board approve resignations, retirements, and unpaid leaves of absence, appointments, long-term substitute teachers, long-term per diem substitute teachers, classification changes, community school staff, Summer Band Director, per diem substitute teachers, per diem substitute bus drivers, substitute van drivers, substitute custodians, and substitute educational assistants.

RESIGNATIONS

Name: Meaghan Albanese
Position: Elementary School Counselor – Groveland Elementary
Effective: June 16, 2015

Name: Amanda Flaska
Position: Personal Care Assistant – Kutz Elementary School
Effective: February 27, 2015

RETIREMENTS

Name: Patricia King
Position: Speech Therapist teacher – Warwick Elementary School
Effective: June 15, 2015

Name: Bonnie Kooker
Position: Special Education Assistant – Linden Elementary School
Effective: March 3, 2015

Name: Joseph Ott
Position: School Bus Driver – Transportation
Effective: February 4, 2015

Name: Eileen Telly
Position: Music teacher – Groveland Elementary School
Effective: June 16, 2015

UNPAID LEAVES OF ABSENCE

Krista Bodkin Special Education Assistant – Tamanend Middle School
March 2, 2015 – March 30, 2015

Katherine Finkbeiner Elementary teacher – Jamison Elementary School
May 11, 2015 – August 2016

Jennifer Kolb Mathematics teacher – Central Bucks High School – South
June 2, 2015 – January 2016

APPOINTMENTS

Name: Katie Logorda
Position: Special Education Assistant – Bridge Valley Elementary School
\$14.37 per hour
Effective: February 9, 2015
Reason: Employee Resignation

Name: Garry Mains
Position: Custodian Floater
\$15.32 per hour
Effective: March 2, 2015
Reason: Employee Transfer

APPOINTMENTS (Cont'd)

Name: Heather Young
Position: Basic Skills Instructional Assistant – Pine Run Elementary School
\$13.87 per hour
Effective: February 17, 2015
Reason: Employee Resignation

LONG-TERM SUBSTITUTE TEACHERS

Name: Natalie Richey
Position: (.41) Business teacher – Central Bucks High School – West
\$10,166 (MS+0 credits, Step 1)
Effective: January 29, 2015 until the end of the 2014-2015 school year

LONG-TERM PER DIEM SUBSTITUTE TEACHERS

Name: Howard Gottlieb
Position: Elementary teacher – Cold Spring Elementary School
\$19.75 per hour
Effective: February 18, 2015

Name: Amy Laff
Position: Special Education teacher – Mill Creek Elementary School
\$19.75 per hour
Effective: February 9, 2015

Name: Justin Leshner
Position: Elementary teacher – Titus Elementary School
\$19.75 per hour
Effective: February 9, 2015

Name: Sharon Payne
Position: Science teacher – Central Bucks High School – East
\$19.75 per hour
Effective: February 9, 2015

Name: Kelli Voorhees
Position: Elementary teacher – Doyle Elementary School
\$19.75 per hour
Effective: February 26, 2016

CLASSIFICATION CHANGES

<u>Name</u>	<u>From</u>	<u>To</u>	<u>Effective Date</u>
Kristie Buckner	(Temp) Sp Ed Asst Linden No Change In Salary	(Perm) Special Ed Asst Linden No Change In Salary	3/3/15
Lisa Costantini	Bus Dispatcher Transportation \$22.78 Per Hour	(Temp) Transportation Mgr Transportation \$29.86 Per Hour	2/2/15

COMMUNITY SCHOOL STAFF

Danica Fossesca Before/After School Educational Assistant \$13.87/hour

SUMMER BAND DIRECTOR

Mark Appiotti \$1,500

PER DIEM SUBSTITUTE TEACHERS Approved salary rate of \$11.85/per hour, greater than 39 days \$13.85/per hour, for the 2014-2015 school year.

Daniel Andrzejewski
Linda Becker
Nicole Brandecker
Tara Capriotti
Gerard Connaughton
Alex Copenhaver
Jacqueline DeMatteo
Alexandra Dusak
John Fisher
Alyssa Getz

Kaitlyn Grundy
Lauren Hall
Bonnie Humphreys
Katie Jones
Alisa Kelly
Elizabeth Kettle
Christine Klingbeil
Emily Koerner
Noel Kress
Cassandra Leonti

Laura Lesnevec
Aimee Porco
Karly Seiz
Jessica Shoap
Anne Marie Varrella
Katrina Wright
Heather Young
Lauren Zeleznik

PER DIEM SUBSTITUTE BUS DRIVERS, SUBSTITUTE VAN DRIVERS, SUBSTITUTE CUSTODIANS, AND SUBSTITUTE EDUCATIONAL ASSISTANTS Approved salary rate of \$20.35/\$13.45/\$14.00/\$10.50 per hour for the 2014-2015 school year.

Substitute Bus Driver:

Donald Hoagland

Substitute Van Driver:

Kelsey Reidmiller

Substitute Custodian:

Sharon Roney

Substitute Educational Assistant:

Kimberly Dillon
Susan Meyers

**CENTRAL BUCKS SCHOOL DISTRICT
SCHOOL BOARD MEETING**

February 24, 2015

FOR ACTION: Adoption of Course of Study

Course of Study for Study Abroad: France

This course is designed to provide French students with an opportunity to use a world language in an authentic culture where French is spoken. Participants will experience the art, music, history, and customs of the country as well as complete tasks to improve their oral proficiency. This is a .25 elective course which includes travel to France for 10 days in the summer with classroom sessions for four months prior to the travel and a post-travel presentation/project in August/September. There is an application process to take this course. Students must be enrolled in a French course in the academic year following the summer travel. Students will be selected for Study Abroad by grade order with rising seniors first, then rising juniors and finally rising sophomores. Approved students will attend academic sessions in the morning while in France and then participate in related activities in the afternoon. The travel and accommodations will be managed by EF Tours (Education First). Coursework will include: linguistic and cultural competencies that one must have in order to function within another culture and experiencing first-hand exposure to another culture impacts one's perspective.

RECOMMENDATION:

The administration is recommending that the Board approve the Course of Study for Study Abroad: France.

CENTRAL BUCKS SCHOOL DISTRICT
Course of Study
Recommendation for Adoption

Course: Study Abroad: France

Date: February 3, 2015

Student Level: High School

Grade Level: Grades 10-12

Characterization of Course of Study:

This course is designed to provide Central Bucks French students with an opportunity to use a world language in an authentic culture where French is spoken. Participants will experience the art, music, history and customs of the country as well as carry out tasks to improve their oral proficiency.

The course of study for **Study Abroad: France** provides specific information about the course including the desired area of travel, the five course elements (Four Pre-travel Sessions, Research Project, Class work in France, Travel, Reflection), World Language Standards addressed in the course as well as essential questions and enduring understandings.

The goal of this course is to provide Central Bucks students with an opportunity to truly apply the skills that they learn in their language classes.

Reasons for Proposed Adoption:

Cultural and global issues impact everyone. Individuals who are culturally aware and proficient in more than one language are more apt to understand and embrace those issues. One of the benefits of traveling abroad is that it gives the students a new frame of reference for understanding the world and their role in it. It provides cultural exposure, develops leadership skills and will contribute to the production of students who are more marketable than their peers in a global economy. Implementing this study abroad course in Central Bucks will allow the students to apply the skills learned in their language class to real world, unpredictable situations; it will allow the students to function in the B and D quadrants of the Rigor, Relevance and Relationships quadrant. An opportunity to travel with classmates and teachers will ensure optimal learning. The attendance of classes taught by CB teachers will provide students with linguistic and cultural support throughout the trip. This course will allow us to produce students who truly understand and experience firsthand the need to be proficient in another language.

February 5, 2015
(Date of Approval)

Principals

February 11, 2015
(Date of Approval)

Curriculum Committee

(Date of Approval)

The Board of School Directors

**CENTRAL BUCKS SCHOOL DISTRICT
SCHOOL BOARD MEETING**

February 24, 2015

FOR ACTION: Student Trips

The Lenape Middle School 9th Grade Team is planning to travel to Washington, D.C. on April 1, 2015. While in Washington, D.C. students will visit the monuments on the National Mall and will visit exhibits at the Smithsonian Natural History Museum. Fourteen teachers, 289 students, and thirty-six parents plan to travel to Washington, D.C. The cost of \$50 for the trip is being paid by the students. Provisions have been made for any students with a financial need.

The Holicong Middle School 9th Grade Class is planning to travel to Washington, D.C. and Arlington, VA on April 9, 2015. While the students are in Washington, D.C. there will be a direct curriculum connection to both social studies and science in terms of the museums that will be explored through a variety of activities. The visit to Arlington National Cemetery is for the experience and personal connection that Team 9 has made to Travis Manion through the organization's character development. Eighteen teachers, 376 students, and seventy-five parents plan to travel to Washington, D.C. and Arlington, VA. The cost of \$40 for the trip is being paid by the students. Provisions have been made for any students with a financial need.

The Unami Middle School 9th Grade Class is planning to travel to New York on April 16, 2015. This trip to the American Museum of Natural History will provide an opportunity for each student to participate in a rich learning experience while connecting to the Geology, Evolution and Paleontology unit of study within the 9th grade science curriculum. Ten teachers, 296 students, and sixty parents plan to travel to New York. The cost of \$58 for the trip is being paid by the students. Provisions have been made for any students with a financial need.

RECOMMENDATION:

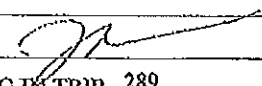
The administration is recommending that the Board approve the Lenape Middle School 9th Grade Team to travel to Washington, D.C. on April 1, 2015; the Holicong Middle School 9th Grade Class to travel to Washington, D.C. and Arlington, VA on April 9, 2015; and the Unami Middle School 9th Grade Class to travel to New York on April 16, 2015.



CENTRAL BUCKS SCHOOL DISTRICT
FIELD TRIP REQUEST —Board of School Directors Permission
 For Major Metropolitan Areas (New York City, Washington, D.C.)

DATE of REQUEST 2/12/2015

PERMISSION IS REQUESTED TO FACILITATE A FIELD TRIP TO
 DESTINATION(S) Washington DC
 ADDRESS(ES) _____
 DATE(S) April 1, 2105

NAME OF SCHOOL Lenape Middle School
 SCHOOL GROUP (Band, Debate, Sports Team, etc.) 9th grade team
 NAME OF SCHOOL GROUP SPONSOR Janet Caparros SPONSOR SIGNATURE 
 NUMBER OF STUDENTS IN GROUP 289 NUMBER OF STUDENTS PARTICIPATING IN TRIP 289
 COST TO EACH STUDENT \$50.00 PROVISION FOR THOSE UNABLE TO PAY Yes

MEANS OF FUNDING TRIP Student payment
 NUMBER OF TEACHERS 14 NUMBER OF PARENTS 36 = TOTAL NUMBER CHAPERONES 50


PARENT PERMISSION SLIPS FOR PARTICIPATING STUDENTS MUST BE ON FILE IN THE OFFICE OF THE PRINCIPAL PRIOR TO THE FIELD TRIP.

EDUCATIONAL PURPOSE FOR TRIP (Include objective, invitation, if applicable): See attached

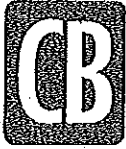
PLEASE ATTACH A DETAILED ITINERARY.

TRANSPORTATION ****Bus Company** Perkdomen Bus Company
 Airline (Name of Carrier) _____
 Other (Specify) _____

****Approved Private School Bus and Chartered Bus vendor verified by the Central Bucks Transportation Department.**

PRINCIPAL SIGNATURE  SCHOOL LENAPE M.S.
 DATE 2/13/15

BOARD PRESIDENT SIGNATURE _____ APPROVAL DATE _____



CENTRAL BUCKS SCHOOL DISTRICT
FIELD TRIP REQUEST —Board of School Directors Permission
 For Major Metropolitan Areas (New York City, Washington, D.C.)

DATE of REQUEST 2/2/15

PERMISSION IS REQUESTED TO FACILITATE A FIELD TRIP TO

DESTINATION(S) Washington, DC and Arlington, Virginia

ADDRESS(ES) Constitution Ave, Washington, DC and Arlington National Cemetery, Arlington, VA

DATE(S) 4/9/20015

NAME OF SCHOOL Hollcong Mfiddle School

SCHOOL GROUP (Band, Debate, Sports Team, etc.) 9th Grade

NAME OF SCHOOL GROUP SPONSOR Team 9

SPONSOR SIGNATURE [Signature]

NUMBER OF STUDENTS IN GROUP ~376

NUMBER OF STUDENTS PARTICIPATING IN TRIP ~376

COST TO EACH STUDENT \$40.00

PROVISION FOR THOSE UNABLE TO PAY _____

Students will be funded through team money (or other Hollcong accounts)

MEANS OF FUNDING TRIP Student (self-funded)

NUMBER OF TEACHERS 18 NUMBER OF PARENTS 75 = TOTAL NUMBER CHAPERONES 93

PARENT PERMISSION SLIPS FOR PARTICIPATING STUDENTS MUST BE ON FILE IN THE OFFICE OF THE PRINCIPAL PRIOR TO THE FIELD TRIP.

EDUCATIONAL PURPOSE FOR TRIP (Include objective, invitation, if applicable): _____

A direct curriculum connection to both 9th grade social studies and science, in terms of the museums, that will be explored through a variety of activities. In addition, the visit to Arlington is for the experience and personal connection Team 9 has made to Travis Manion through the organization's character development.

PLEASE ATTACH A DETAILED ITINERARY.

TRANSPORTATION **Bus Company Perkloten

Airline (Name of Carrier) _____

Other (Specify) _____

**Approved Private School Bus and Chartered Bus vendor verified by the Central Bucks Transportation Department.

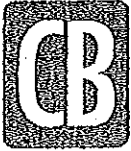
PRINCIPAL SIGNATURE [Signature]

SCHOOL HOLLCONG

DATE 2/9/15

BOARD PRESIDENT SIGNATURE _____

APPROVAL DATE _____



CENTRAL BUCKS SCHOOL DISTRICT
FIELD TRIP REQUEST — Board of School Directors Permission
 For Major Metropolitan Areas (New York City, Washington, D.C.)

DATE of REQUEST 2/3/2015

PERMISSION IS REQUESTED TO FACILITATE A FIELD TRIP TO
 DESTINATION(S) American Museum of Natural History, New York City
 ADDRESS(ES) 79th Street and Central Park West, New York, NY 10024
 DATE(S) April 16, 2015

NAME OF SCHOOL Unami Middle School
 SCHOOL GROUP (Band, Debate, Sports Team, etc.) 9th grade class trip (entire 9th grade)
 NAME OF SCHOOL GROUP SPONSOR Jesse Scheck SPONSOR SIGNATURE Jesse Scheck
 NUMBER OF STUDENTS IN GROUP 296 NUMBER OF STUDENTS PARTICIPATING IN TRIP 296
 COST TO EACH STUDENT \$58.00 PROVISION FOR THOSE UNABLE TO PAY School fund created for students on reduced lunches.
 MEANS OF FUNDING TRIP Collection from students / parents
 NUMBER OF TEACHERS 10 NUMBER OF PARENTS 60 = TOTAL NUMBER CHAPERONES 70

PARENT PERMISSION SLIPS FOR PARTICIPATING STUDENTS MUST BE ON FILE IN THE OFFICE OF THE PRINCIPAL PRIOR TO THE FIELD TRIP.

EDUCATIONAL PURPOSE FOR TRIP (Include objective, invitation, if applicable): This trip will provide an opportunity for each student to participate in a rich learning experience while connecting to the following units of study within the 9th grade science curriculum: Geology, Evolution & Paleontology.

PLEASE ATTACH A DETAILED ITINERARY.

TRANSPORTATION **Bus Company Hagey Coach Inc. (8 charter buses)
 Airline (Name of Carrier) _____
 Other (Specify) _____

**Approved Private School Bus and Chartered Bus vendor verified by the Central Bucks Transportation Department.

PRINCIPAL SIGNATURE Christina D. Long SCHOOL Unami Middle School
 DATE _____

BOARD PRESIDENT SIGNATURE _____ APPROVAL DATE _____

**CENTRAL BUCKS SCHOOL DISTRICT
SCHOOL BOARD MEETING**

February 24, 2015

FOR ACTION: Staff Conferences/Workshops

The following staff conferences/workshops are for approval:

<u>Name</u>	<u>Area</u>	<u>Dates</u>	<u>Workshop Name</u>	<u>Location</u>	<u>Gen Fund</u>	<u>Grants</u>	<u>Total</u>
Cox, Denise	Support Staff	4/13-4/17/15	Edulog Training Conference	Nevada	2,000		
Geiger, Grace	Support Staff	4/14-4/15/15	AESOP Training	Philadelphia	399		
Kahley, Jeanann	Administrator	3/18/15	Microsoft Solutions for the Class	Philadelphia		35	
Kern, Adam	Support Staff	4/13-4/17/15	Edulog Training Conference	Nevada	2,000		
Matyas, David	Administrator	3/10-3/13/15	PASBO	Hershey	926		
Salvesen, Susan	Administrator	3/18/15	Microsoft Solutions for the Class	Philadelphia		35	
Trawinski, Christine	Support Staff	4/14-4/15/15	AESOP Training	Philadelphia	489		
Turner, Danielle	Administrator	3/17-3/20/15	PA State Athletic Directors	Hershey	892		
Wohl, Charles	Support Staff	3/13-4/17/15	Edulog Training Conference	Nevada	2,000		
Wood, Courtney	Professional	3/19/15	PATTAN	King of Prussia	91		
Totals this meeting					8,797	70	8,867
Year to date from last meeting					180	13,804	13,984
Totals year to date					8,977	13,874	22,851
General fund budget 27,000							

RECOMMENDATION:

The administration is recommending that the Board approve the above staff to attend the listed conferences/workshops.